

Sfora % (5.05702), MOV atr%14 (1.89424), MOV atr%60 (2.25046)

5

AssecoPol (42.5000, 42.8000, 42.0200, 42.2900, -0.21000), max02 (45.9960), max03 (44.8284), sfora psuff (45.3543, 46.0146, 46.4479, 46.7988, 47.0073, 47.1113, 47.2167, 47.3459)

53.5

53.0

52.5

52.0

51.5

51.0

50.5

50.0

49.5

49.0

48.5

48.0

47.5

47.0

46.5

46.0

45.5

45.0

44.5

44.0

43.5

43.0

42.5

42.0

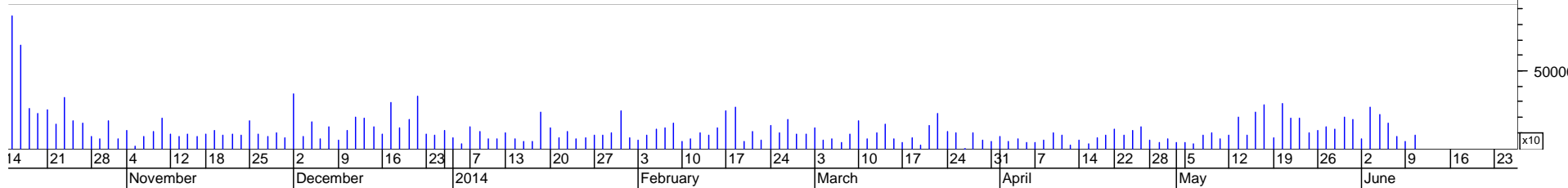
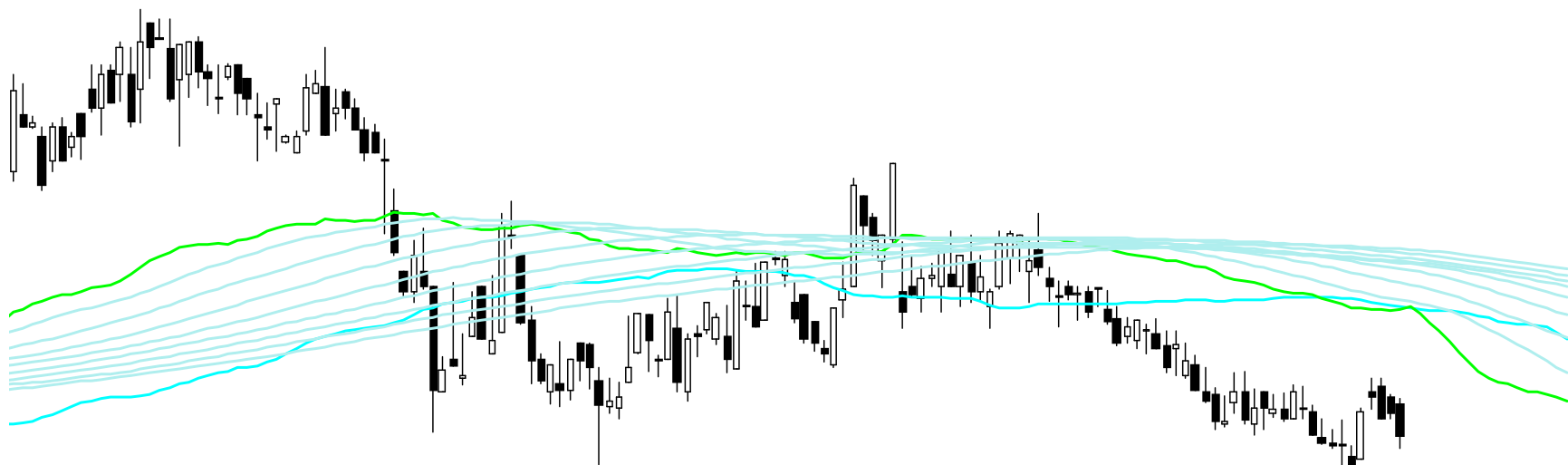
41.5

41.0

40.5

40.0

39.5

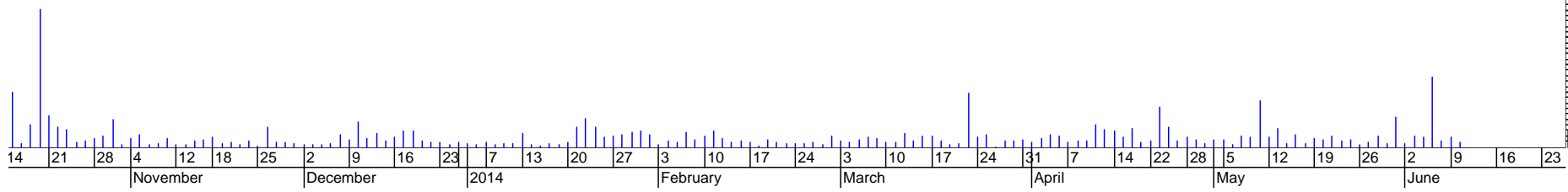
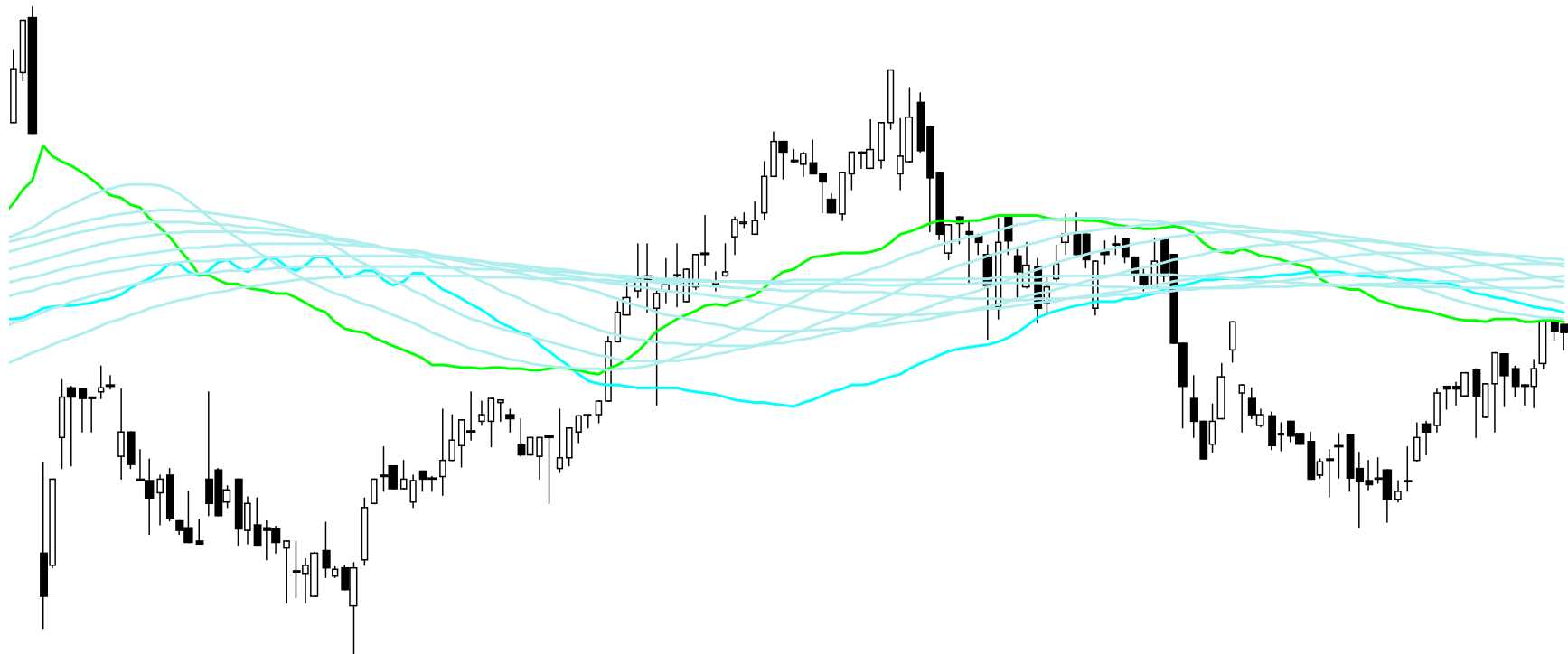


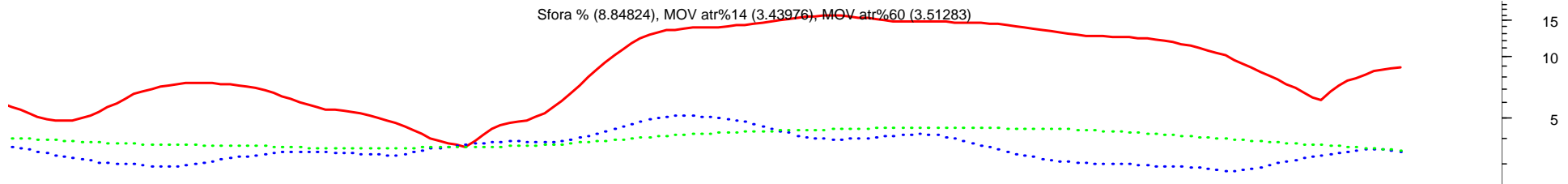
Sfora % (3.30675), MOV atr%14 (2.19195), MOV atr%60 (2.67340)

5

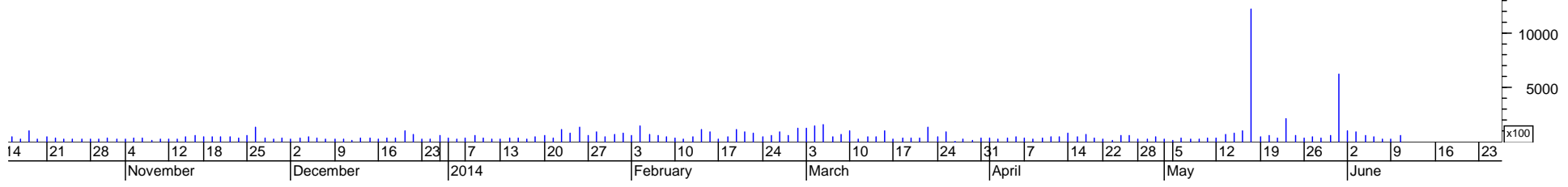
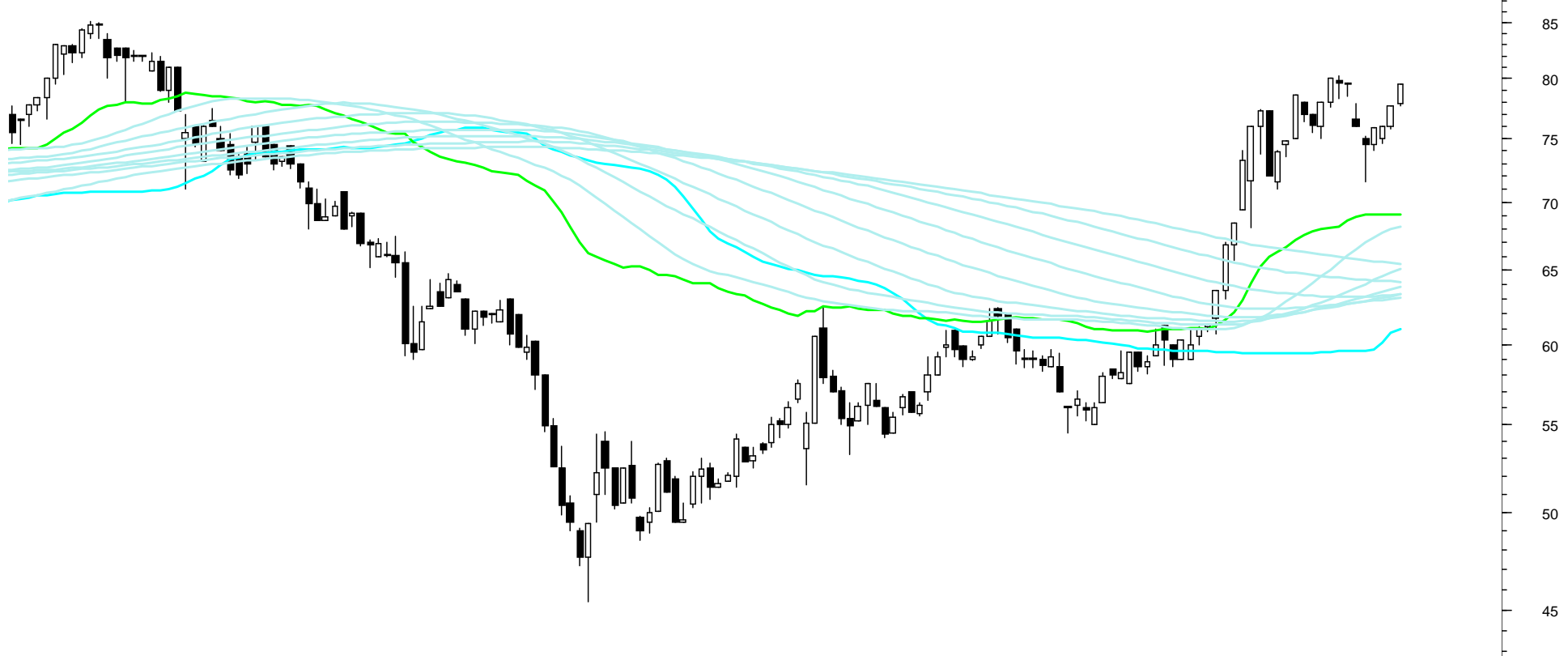
Alior Bank (84.7500, 84.7500, 83.6200, 84.3900, -0.06000), max02 (85.3508), max03 (84.9262), sfora psuff (85.0266, 85.7618, 86.7346, 87.4755, 87.7689, 87.5797, 86.9927, 86.4875)

103
102
101
100
99
98
97
96
95
94
93
92
91
90
89
88
87
86
85
84
83
82
81
80
79
78
77
76
75
74
73
72
71
70
69
25000
20000
15000
10000
5000
x100

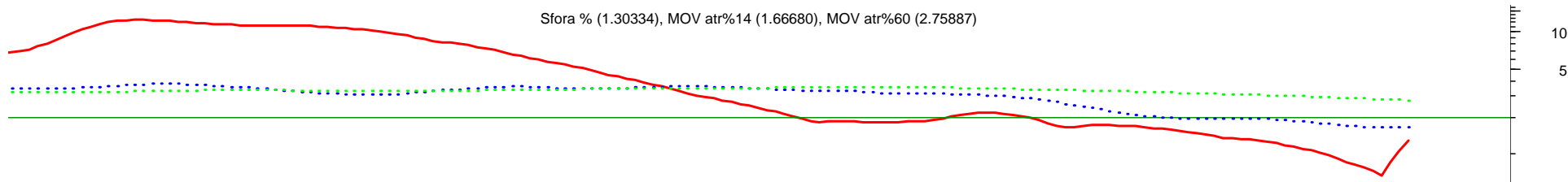




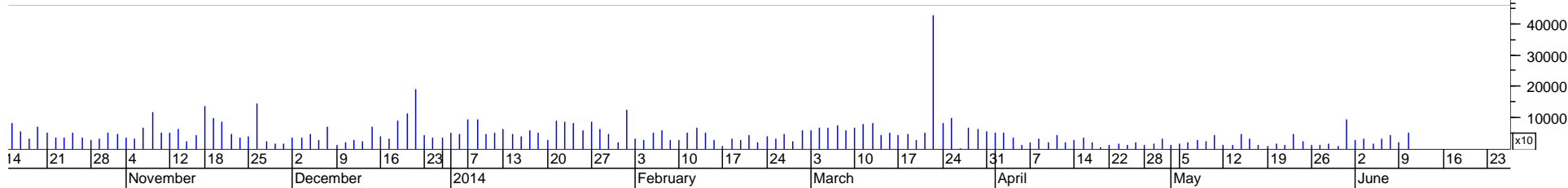
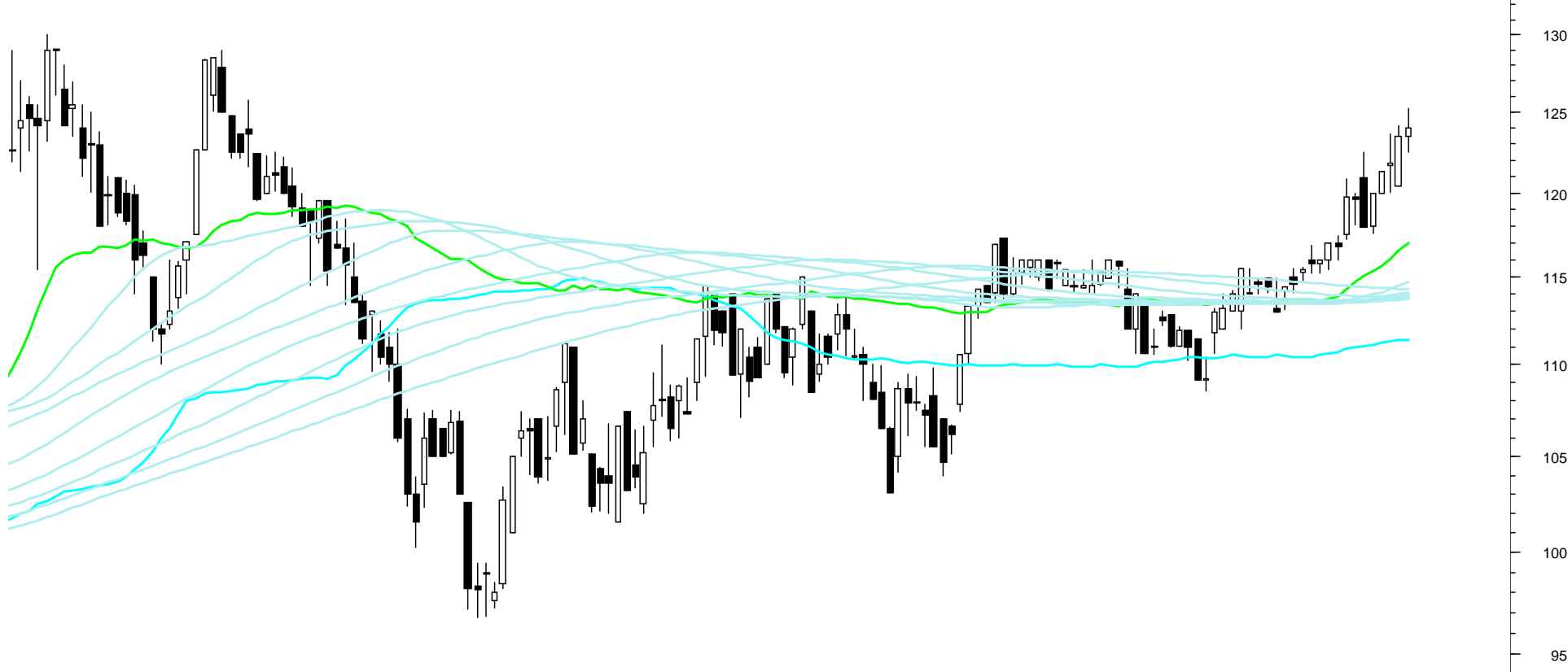
Azoty Tarnow (77.9000, 79.5000, 77.7000, 79.5000, +1.81000), max02 (60.9750), max03 (69.0873), sfora psuff (68.1791, 65.1266, 63.8560, 63.3201, 63.1279, 63.3312, 64.1941, 65.4695)

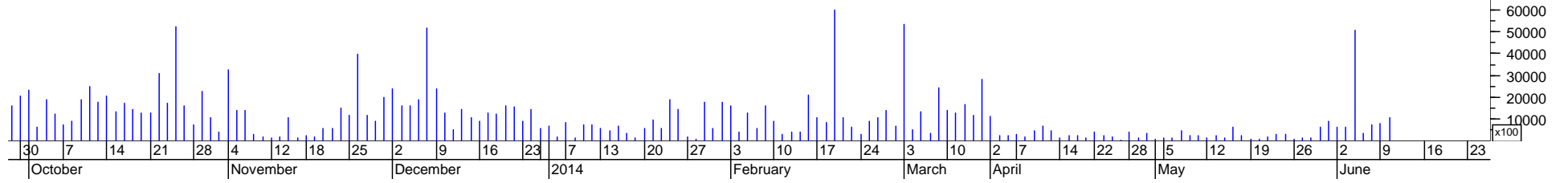
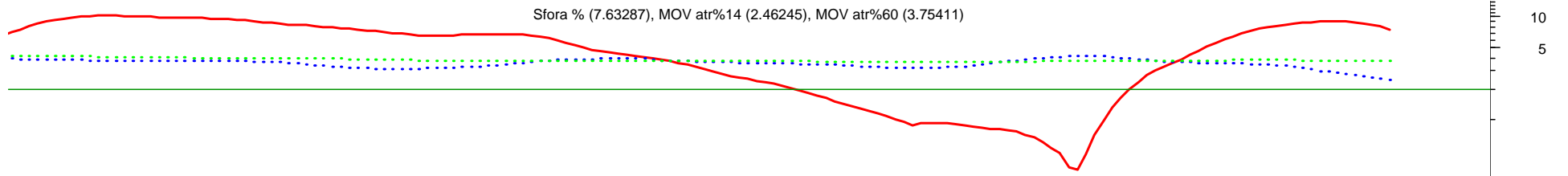


Sfora % (1.30334), MOV atr%14 (1.66680), MOV atr%60 (2.75887)



Handlowy (123.500, 125.250, 122.500, 124.000, +0.50000), max02 (111.397), max03 (116.979), sfora psuff (114.696, 114.111, 113.921, 113.744, 113.763, 113.786, 113.887, 114.297)



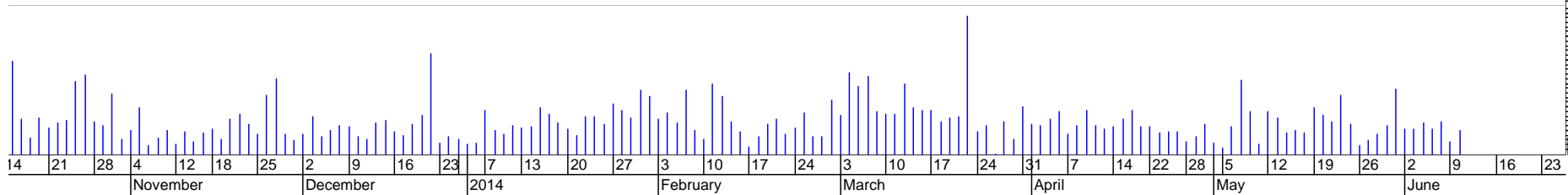
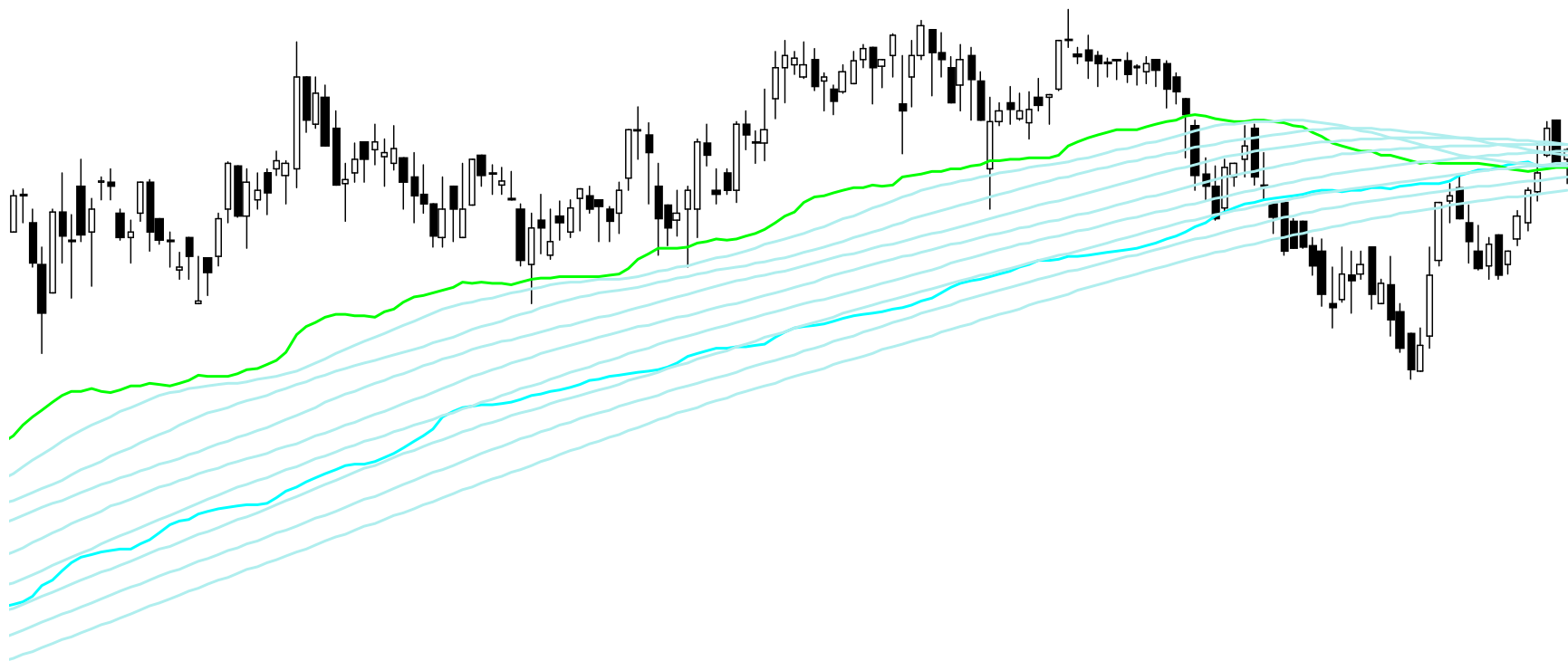


Sfora % (2.70201), MOV atr%14 (2.79853), MOV atr%60 (2.82456)

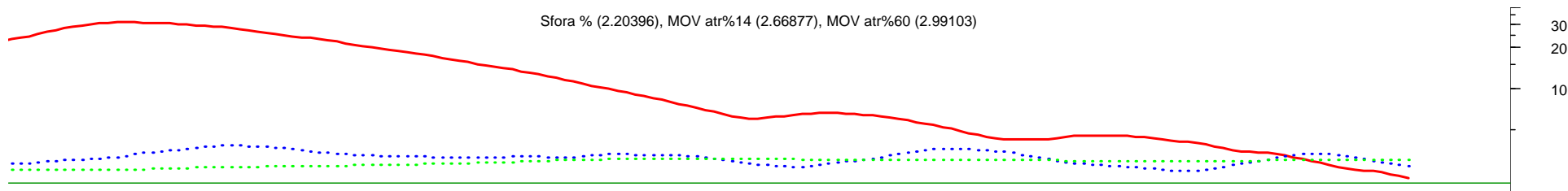
10
5

BZWBK (391.000, 393.350, 385.550, 393.000, +3.10001), max02 (389.418), max03 (389.341), sfora psuff (389.438, 391.817, 394.441, 394.220, 392.785, 390.173, 387.004, 384.063)

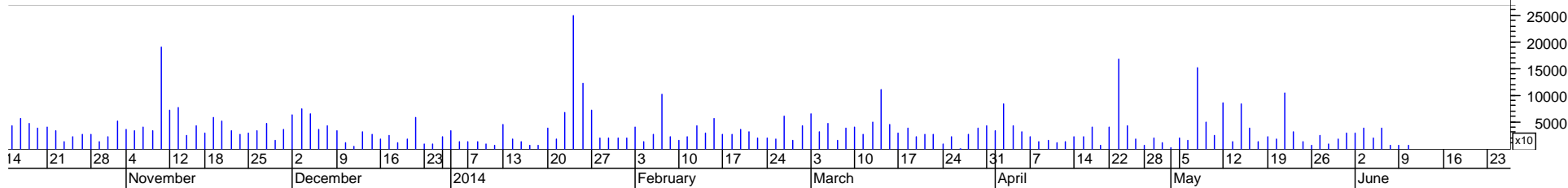
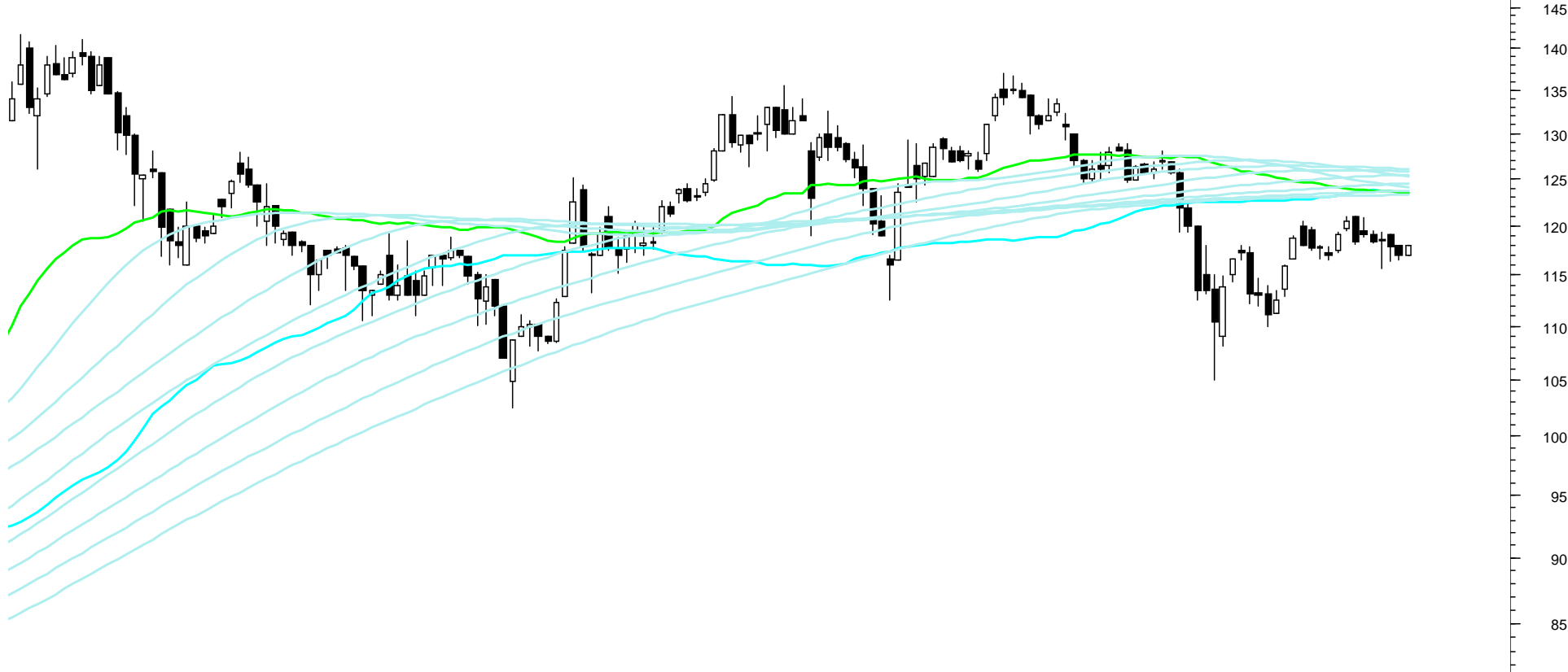
435
430
425
420
415
410
405
400
395
390
385
380
375
370
365
360
355
350
345
340
335
330
325
320
315
310
305
300
295
290
285
30000
25000
20000
15000
10000
5000
x10



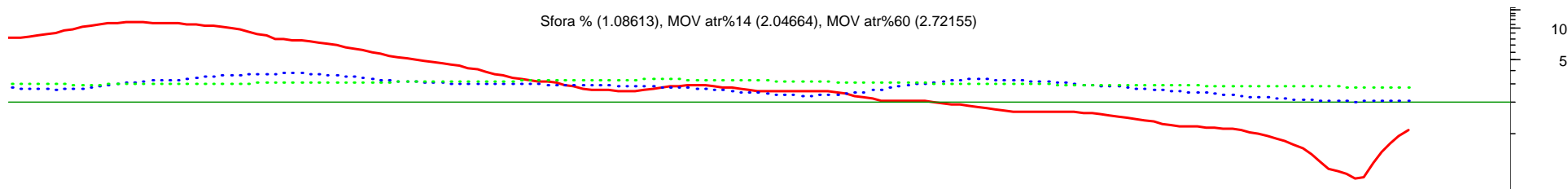
Sfora % (2.20396), MOV atr%14 (2.66877), MOV atr%60 (2.99103)



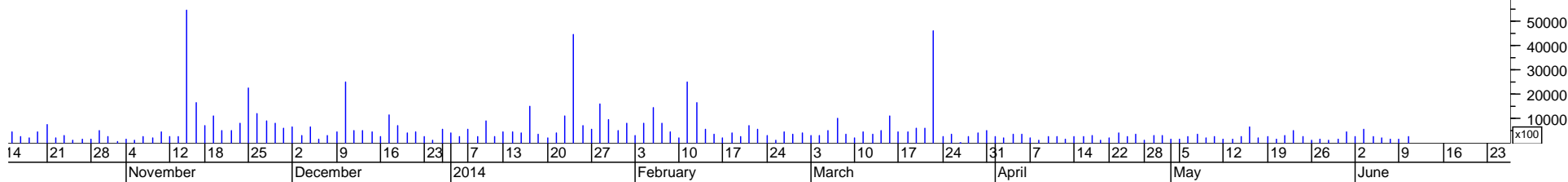
CCC (117.000, 117.950, 117.000, 117.950, +0.95000), max02 (123.546), max03 (123.442), sfora psuff (124.089, 125.316, 126.005, 125.818, 125.436, 124.524, 123.749, 123.288)

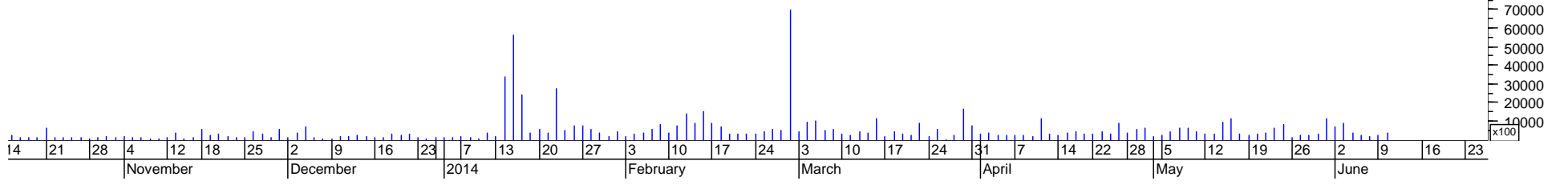
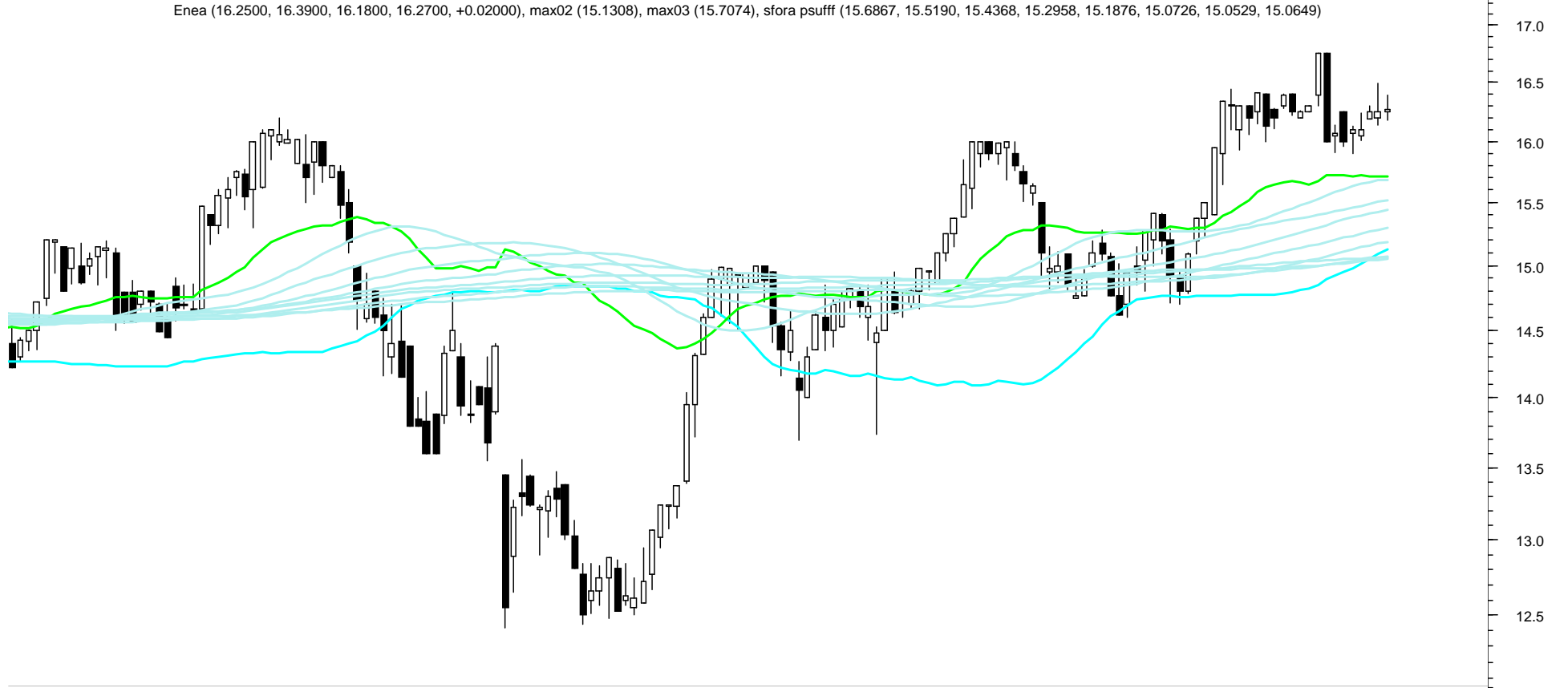
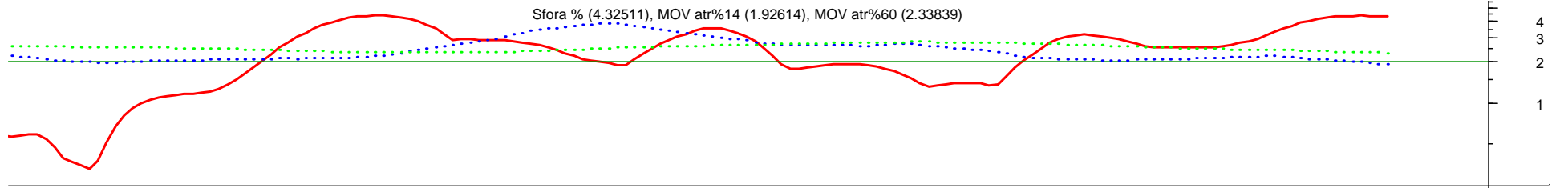


Sfora % (1.08613), MOV atr%14 (2.04664), MOV atr%60 (2.72155)



Cyfrowy Polsat (22.3200, 22.7700, 22.3200, 22.7700, +0.27000), max02 (20.5235), max03 (21.4181), sfora psuff (21.1742, 21.0623, 21.0680, 21.0772, 21.0483, 21.0246, 21.0325, 21.0706)

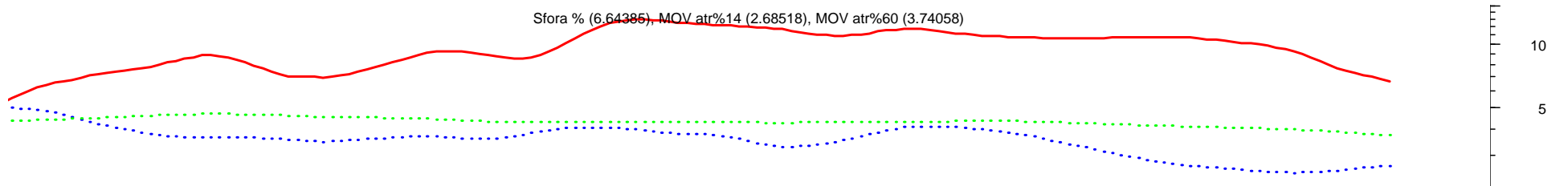




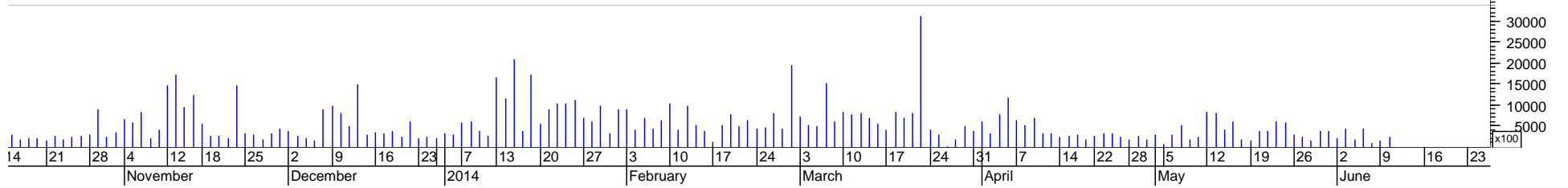
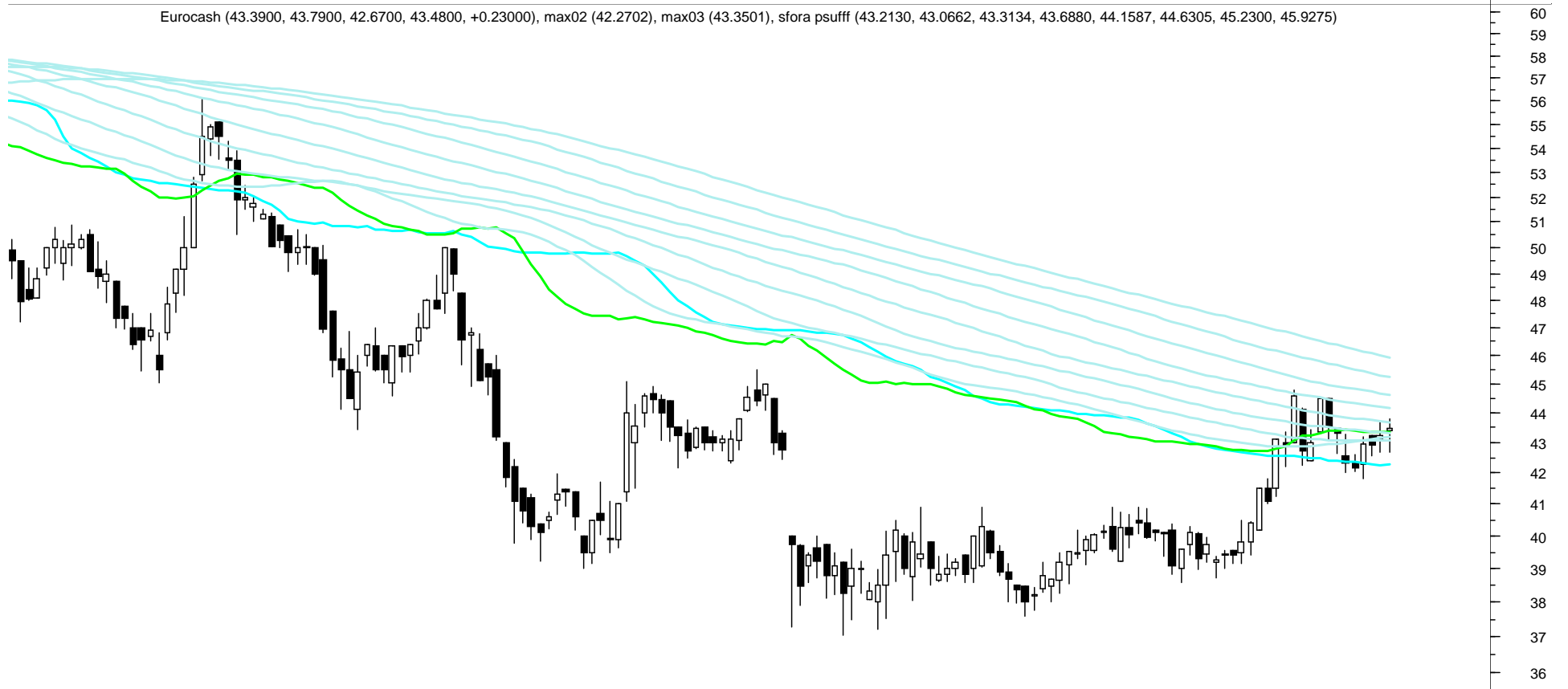
14 21 28 4 12 18 25 2 9 16 23 7 13 20 27 3 10 17 24 3 10 17 24 31 7 14 22 28 5 12 19 26 2 9 16 23

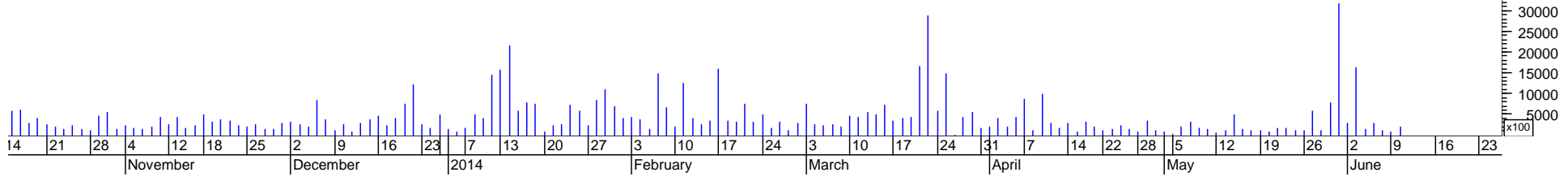
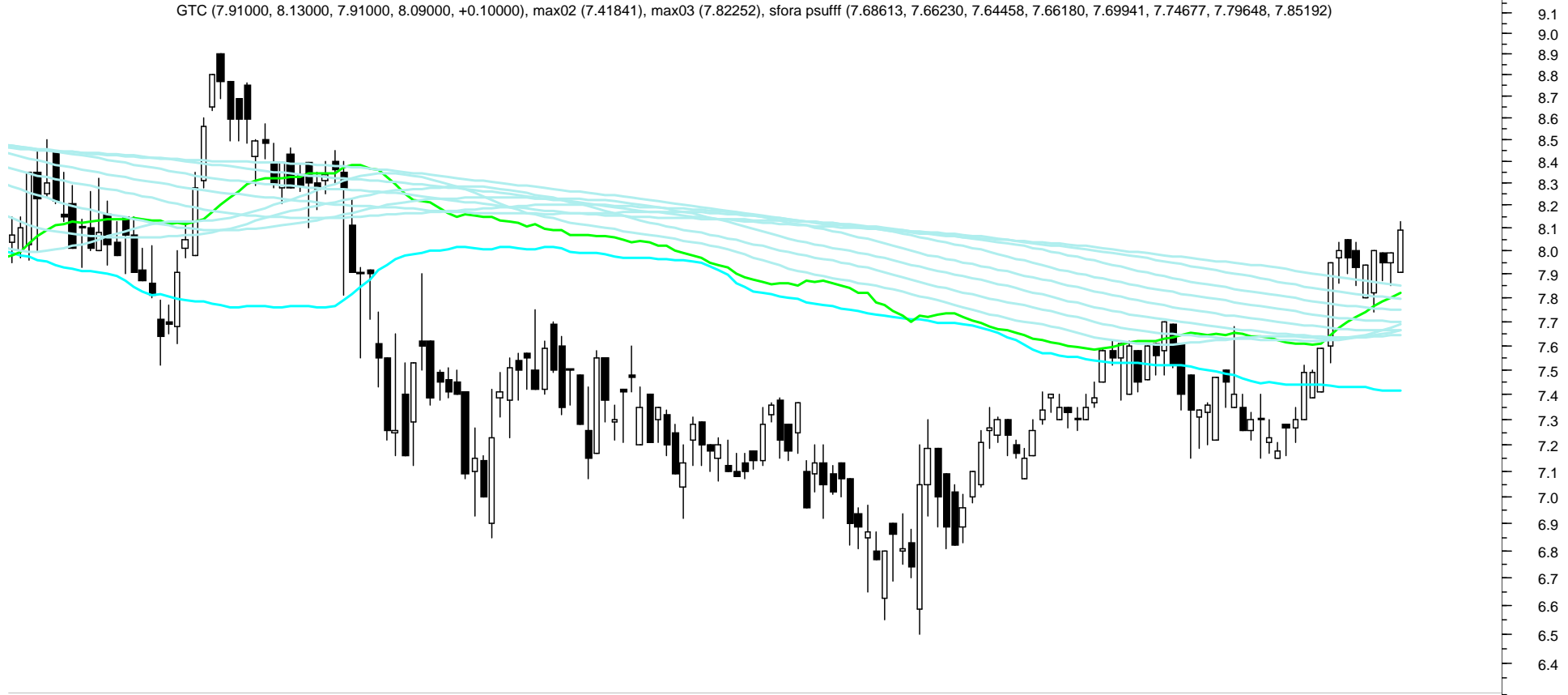
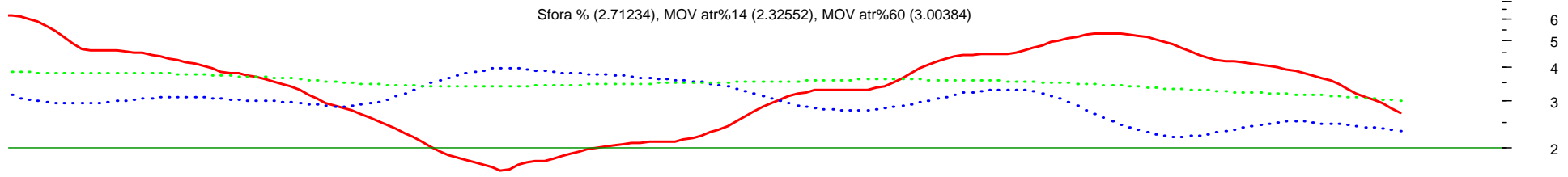
November December 2014 February March April May June

Sfora % (6.64385), MOV atr%14 (2.68518), MOV atr%60 (3.74058)

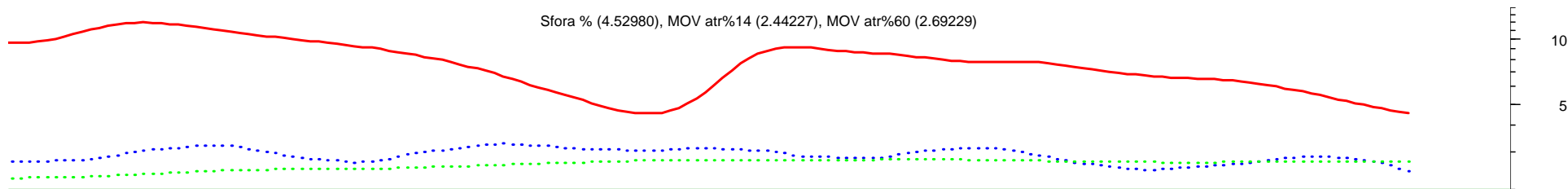


Eurocash (43.3900, 43.7900, 42.6700, 43.4800, +0.23000), max02 (42.2702), max03 (43.3501), sfora psuff (43.2130, 43.0662, 43.3134, 43.6880, 44.1587, 44.6305, 45.2300, 45.9275)

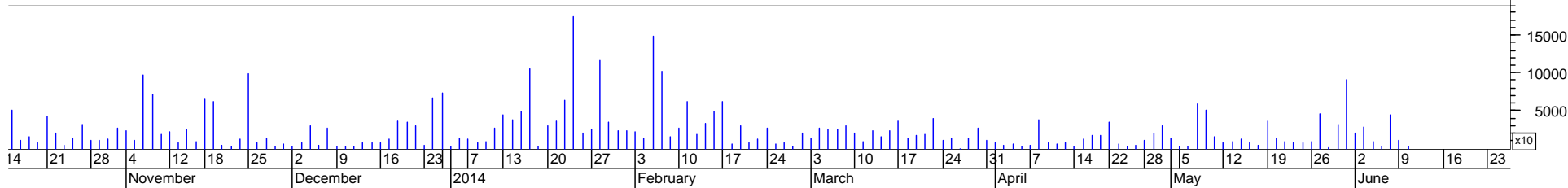
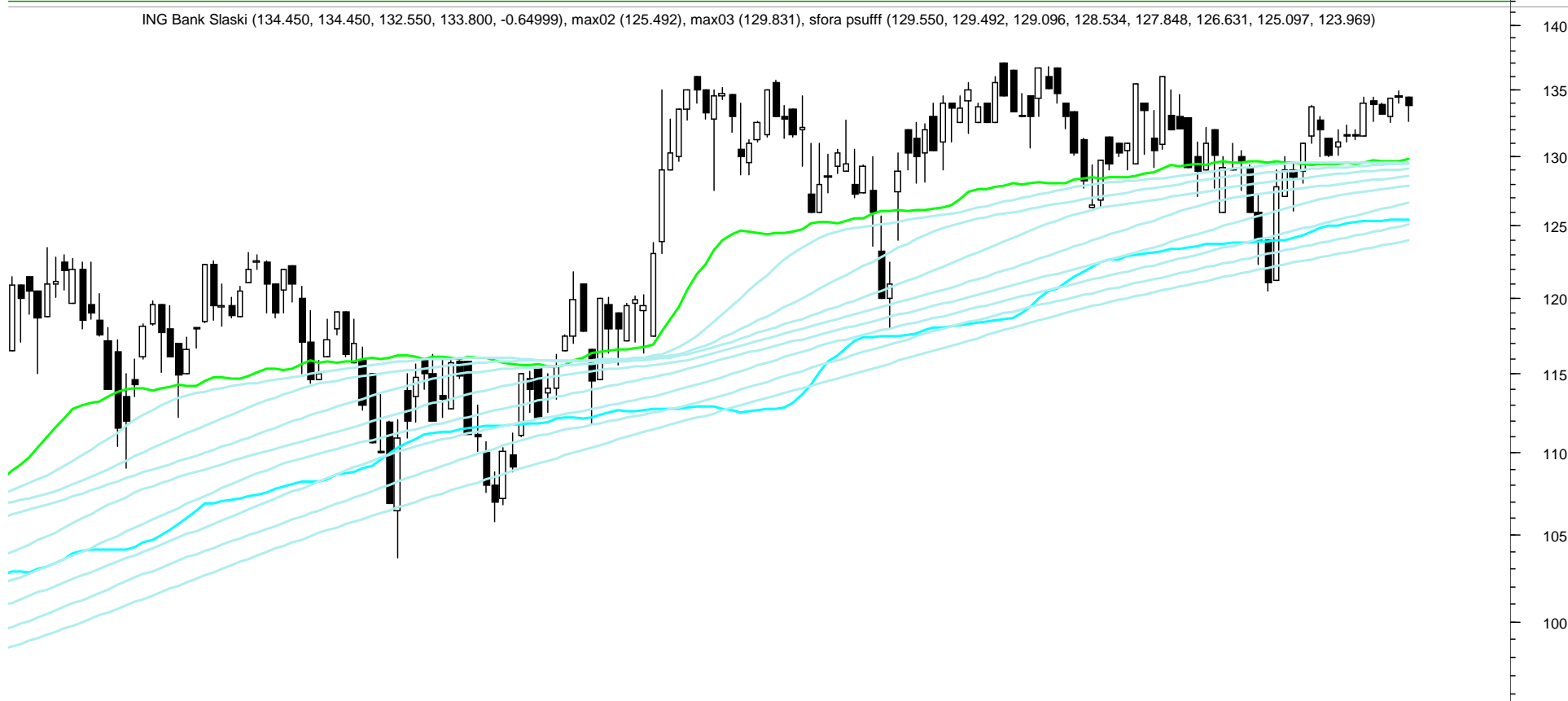


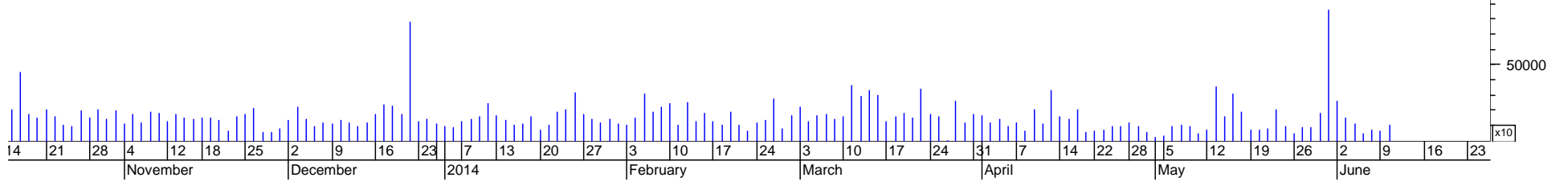
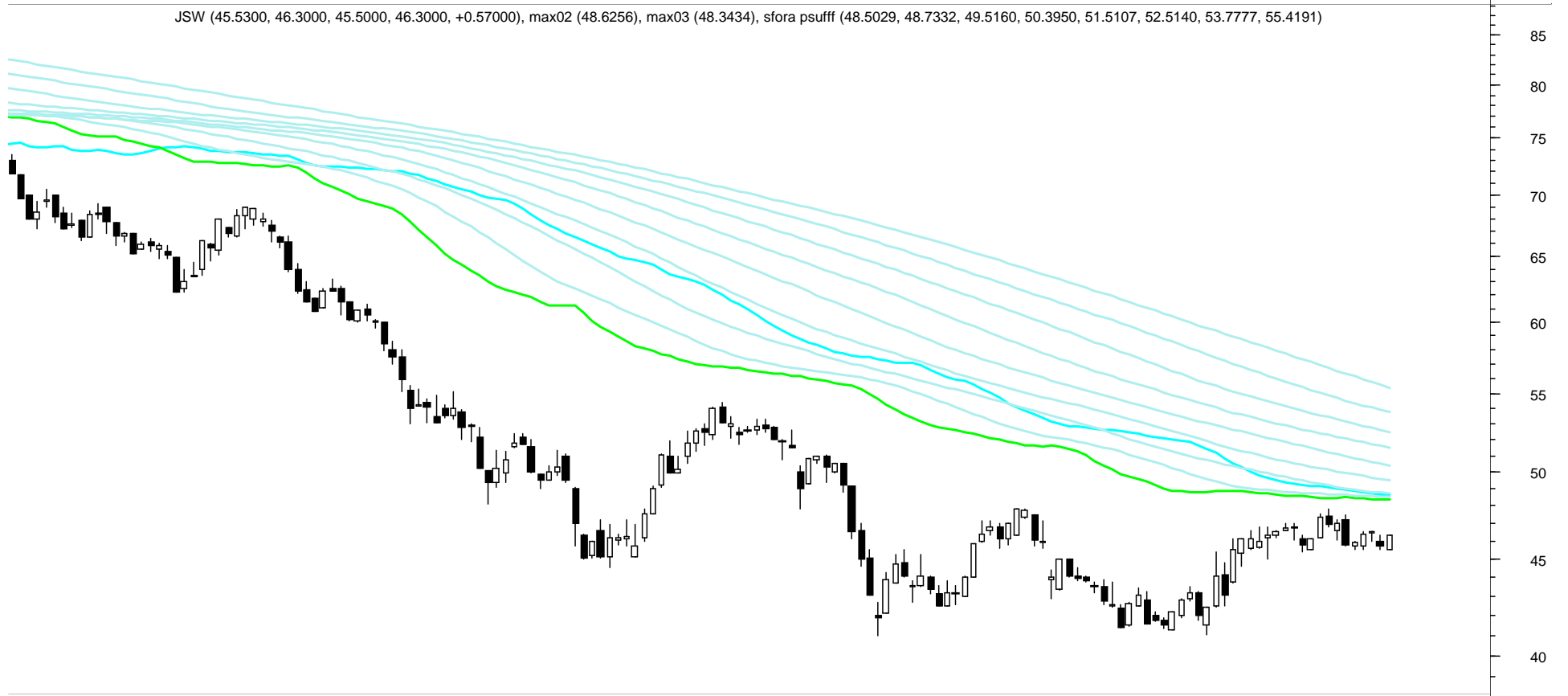
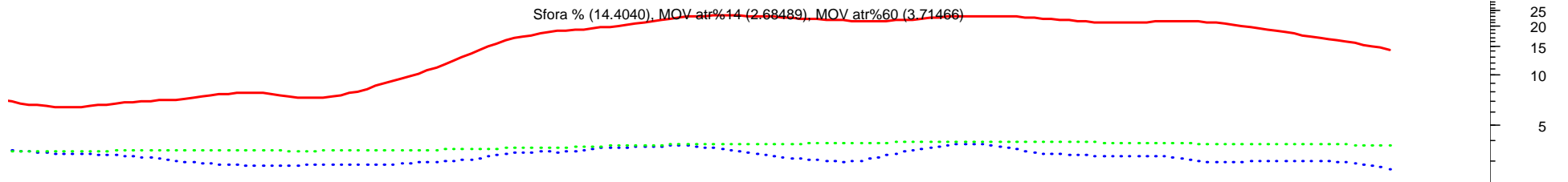


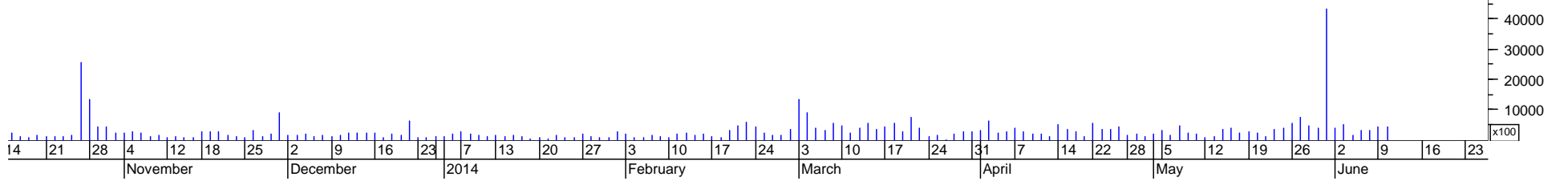
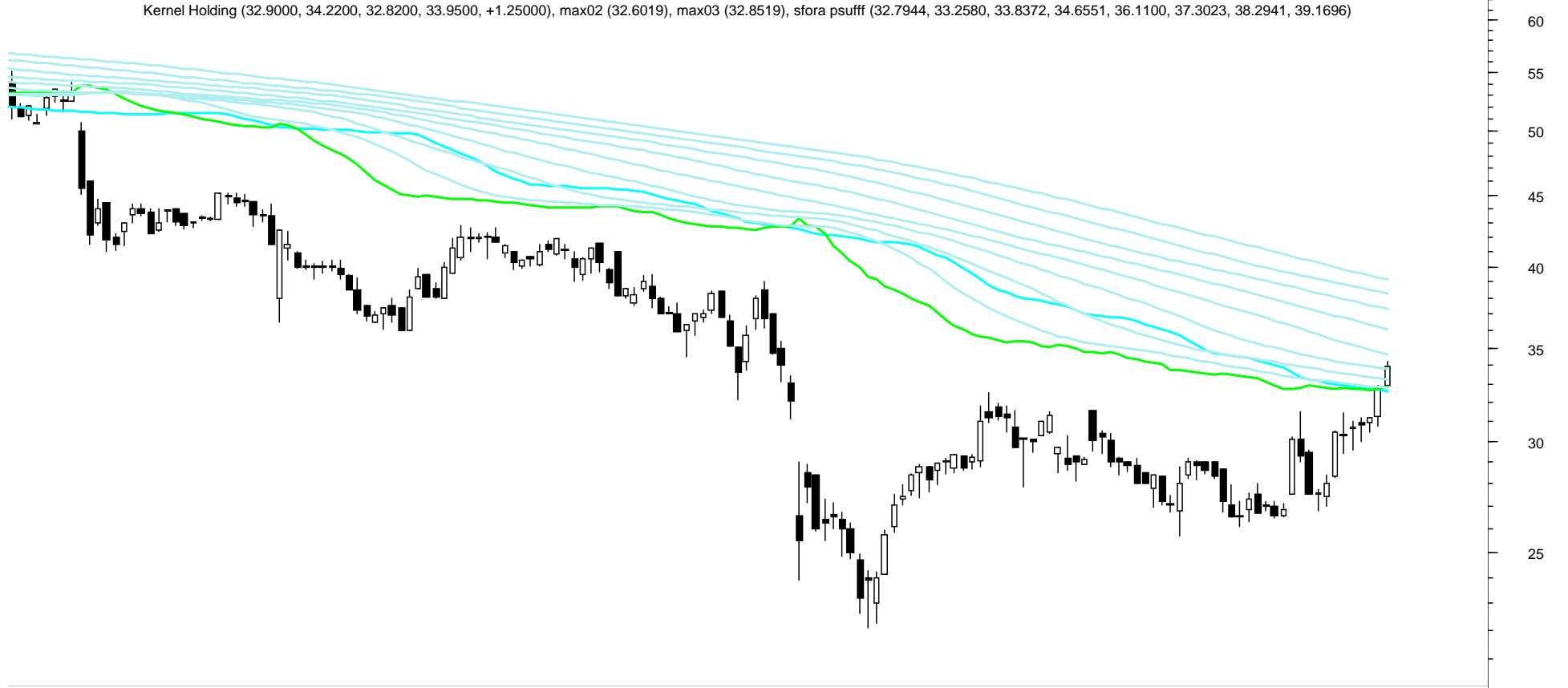
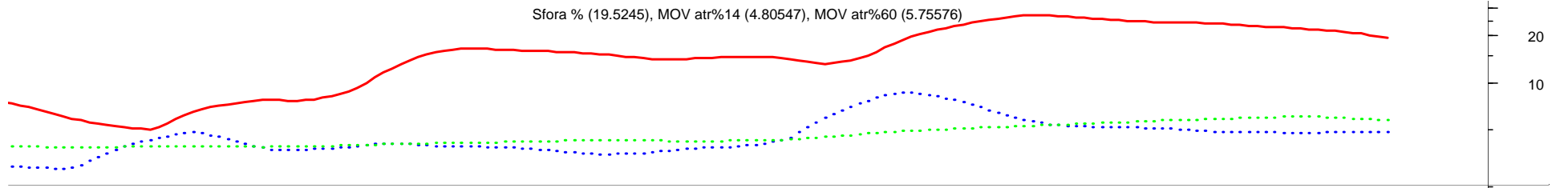
Sfora % (4.52980), MOV atr%14 (2.44227), MOV atr%60 (2.69229)



ING Bank Slaski (134.450, 134.450, 132.550, 133.800, -0.64999), max02 (125.492), max03 (129.831), sfora psuff (129.550, 129.492, 129.096, 128.534, 127.848, 126.631, 125.097, 123.969)





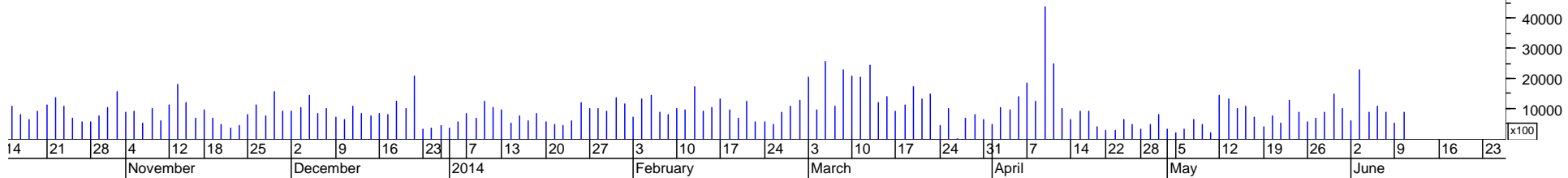
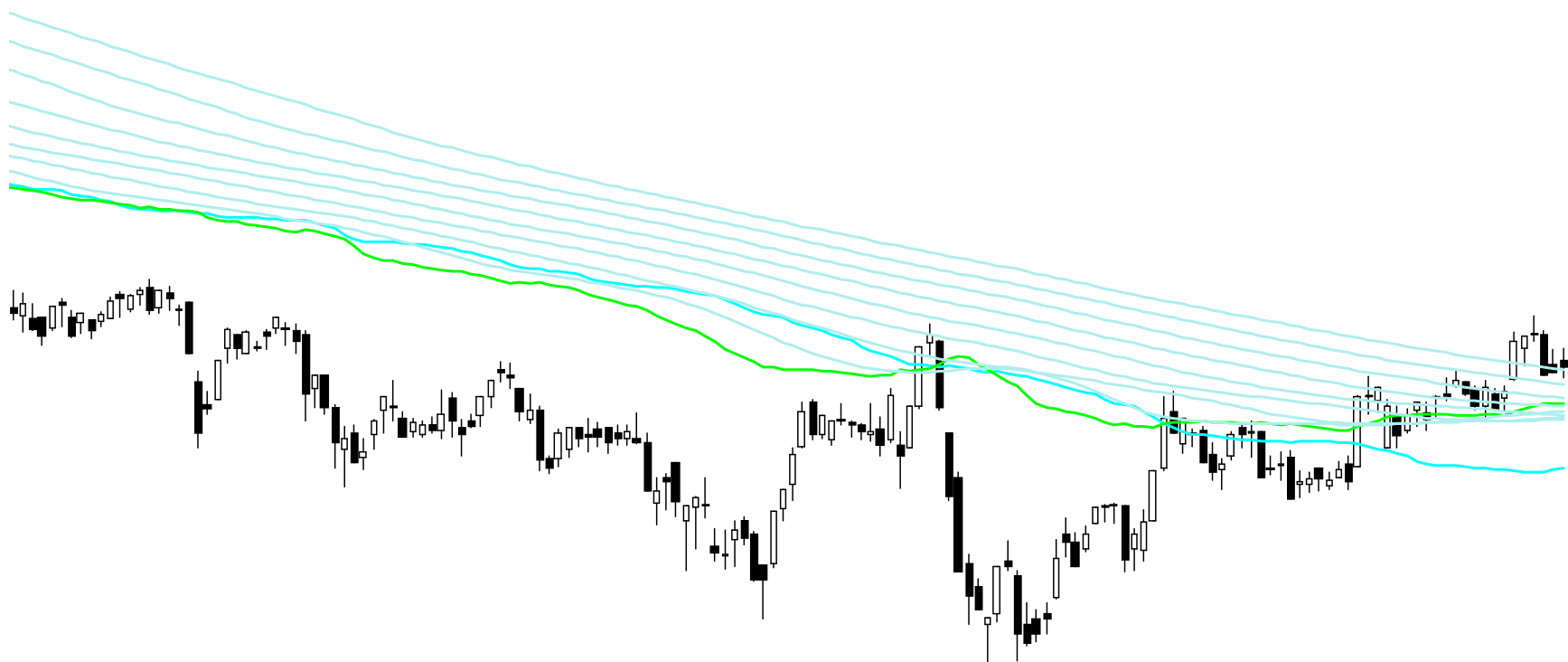


Sfora % (3.18224), MOV atr%14 (2.02172), MOV atr%60 (2.71418)

10
5

KGHM (119.500, 120.450, 118.200, 119.000, +0.40000), max02 (111.656), max03 (116.320), sfora psuff (115.719, 115.286, 115.135, 115.421, 116.118, 116.703, 117.737, 118.799)

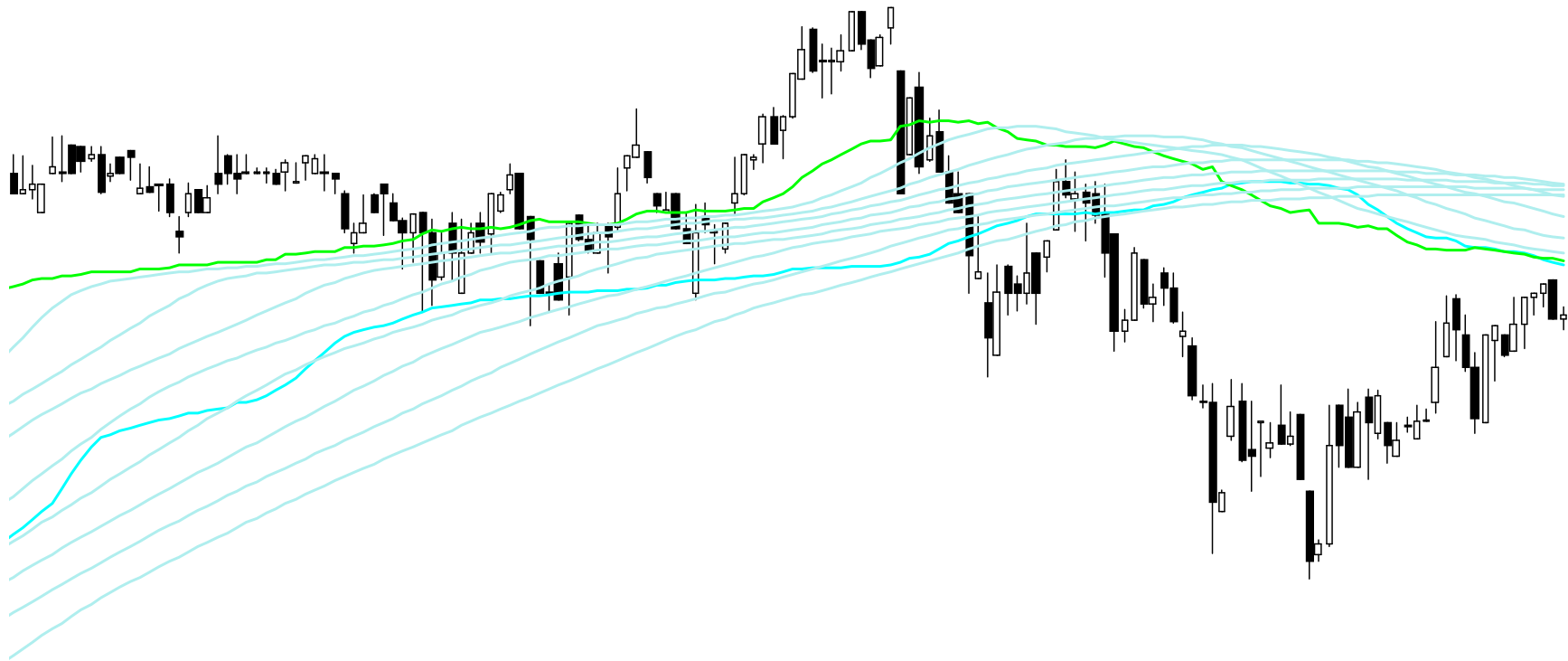
150
145
140
135
130
125
120
115
110
105
100



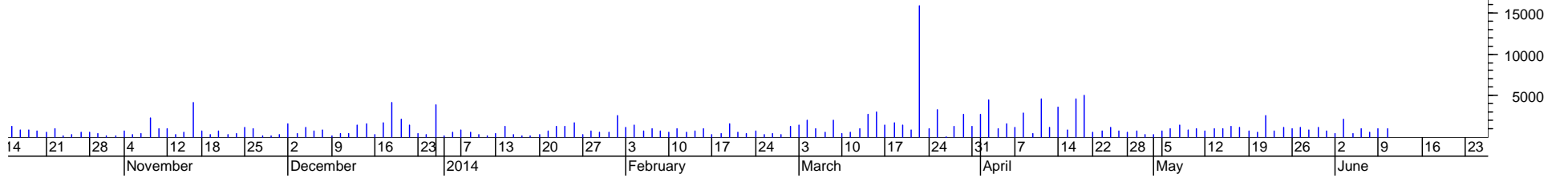
Sfora % (4.09449), MOV atr%14 (3.28103), MOV atr%60 (3.27989)

20
10

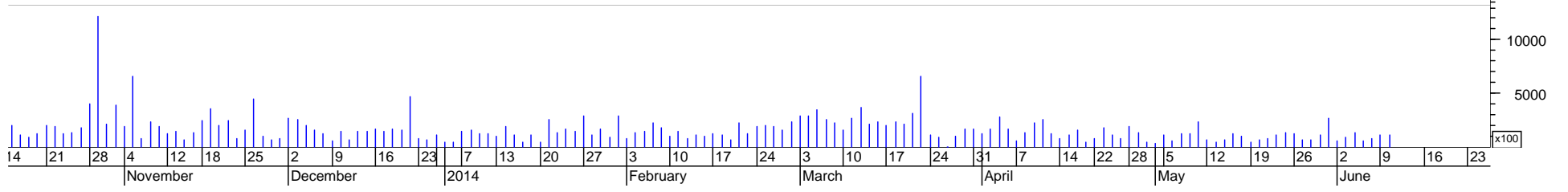
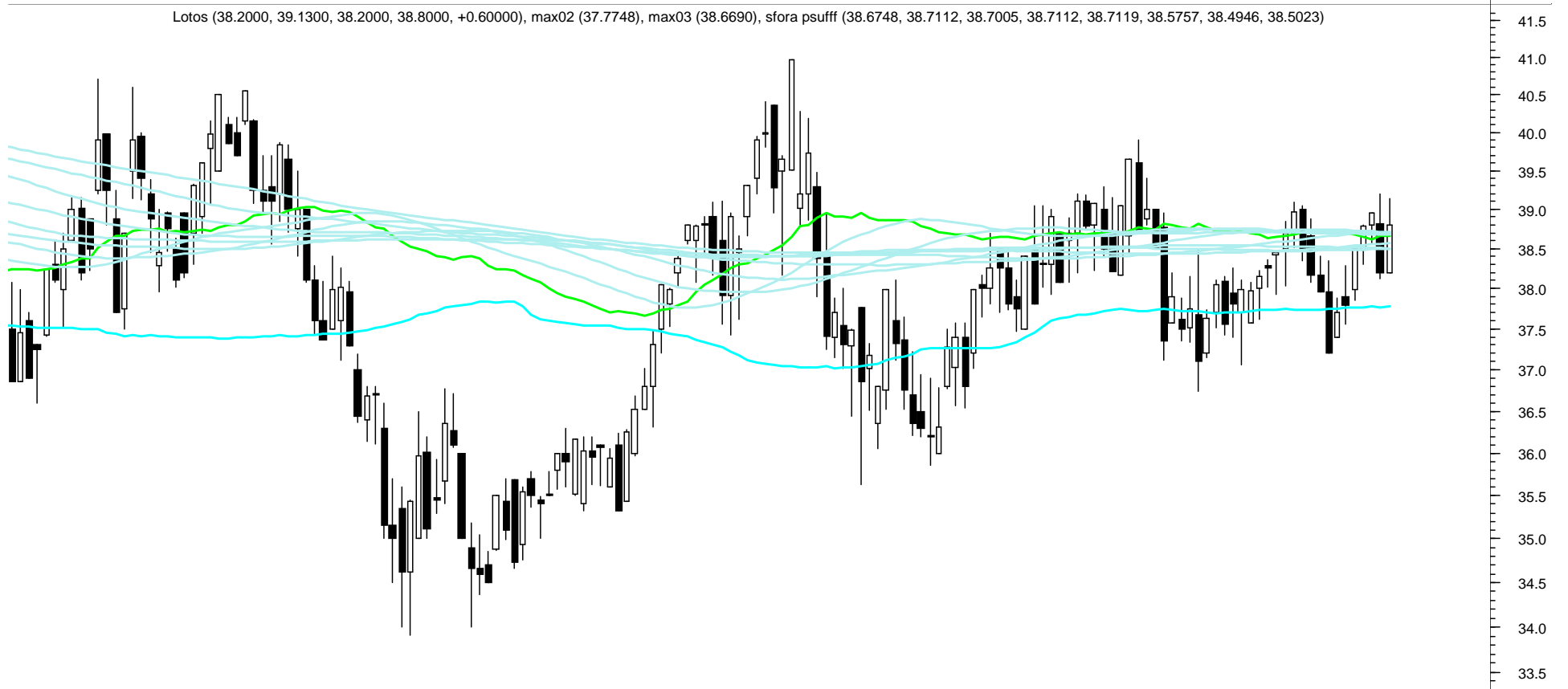
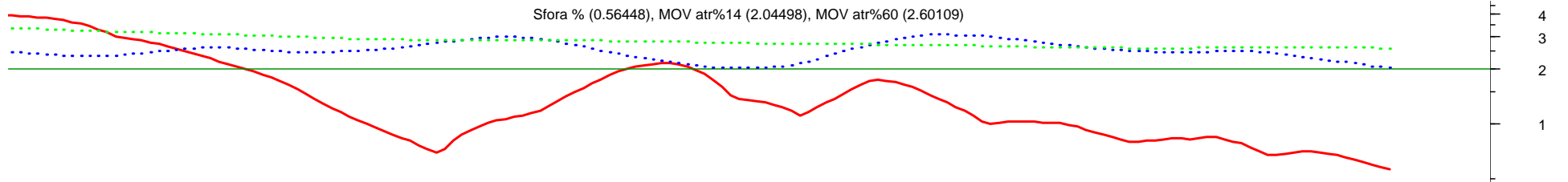
LPP (8,382.35, 8,435.00, 8,330.05, 8,400.00, +17.6504), max02 (8,640.08), max03 (8,661.55), sfora psuff (8,701.19, 8,771.36, 8,884.34, 8,981.79, 9,049.92, 9,040.38, 9,016.32, 8,991.60)



10200
10100
10000
9900
9800
9700
9600
9500
9400
9300
9200
9100
9000
8900
8800
8700
8600
8500
8400
8300
8200
8100
8000
7900
7800
7700
7600
7500
7400
7300
7200
7100
7000
6900
6800



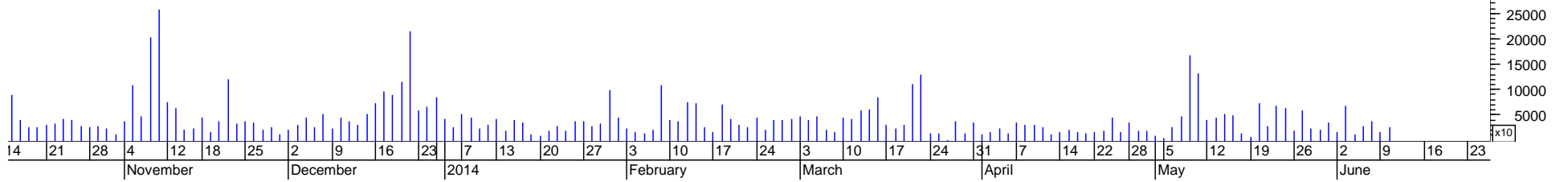
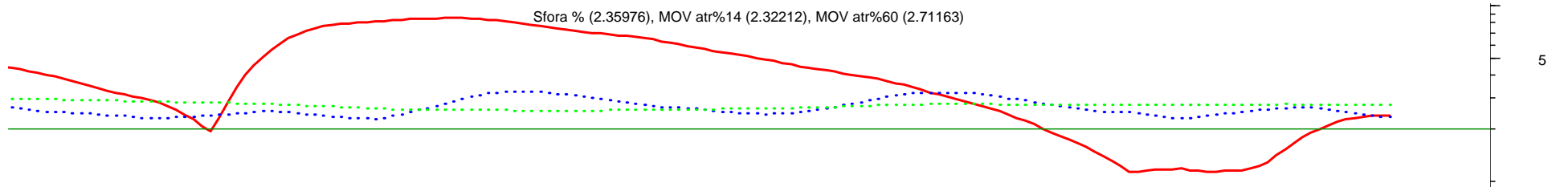
15000
10000
5000

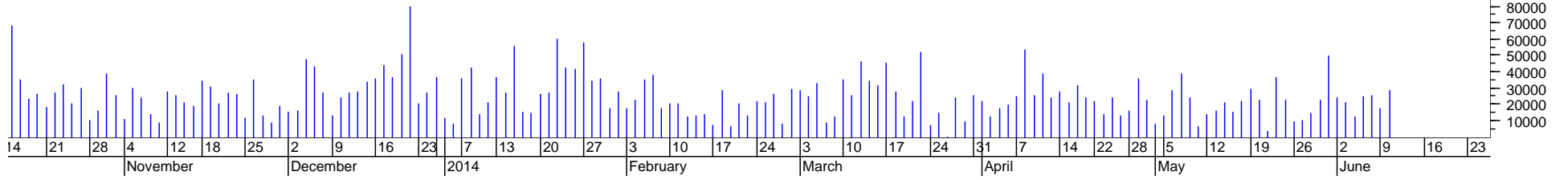
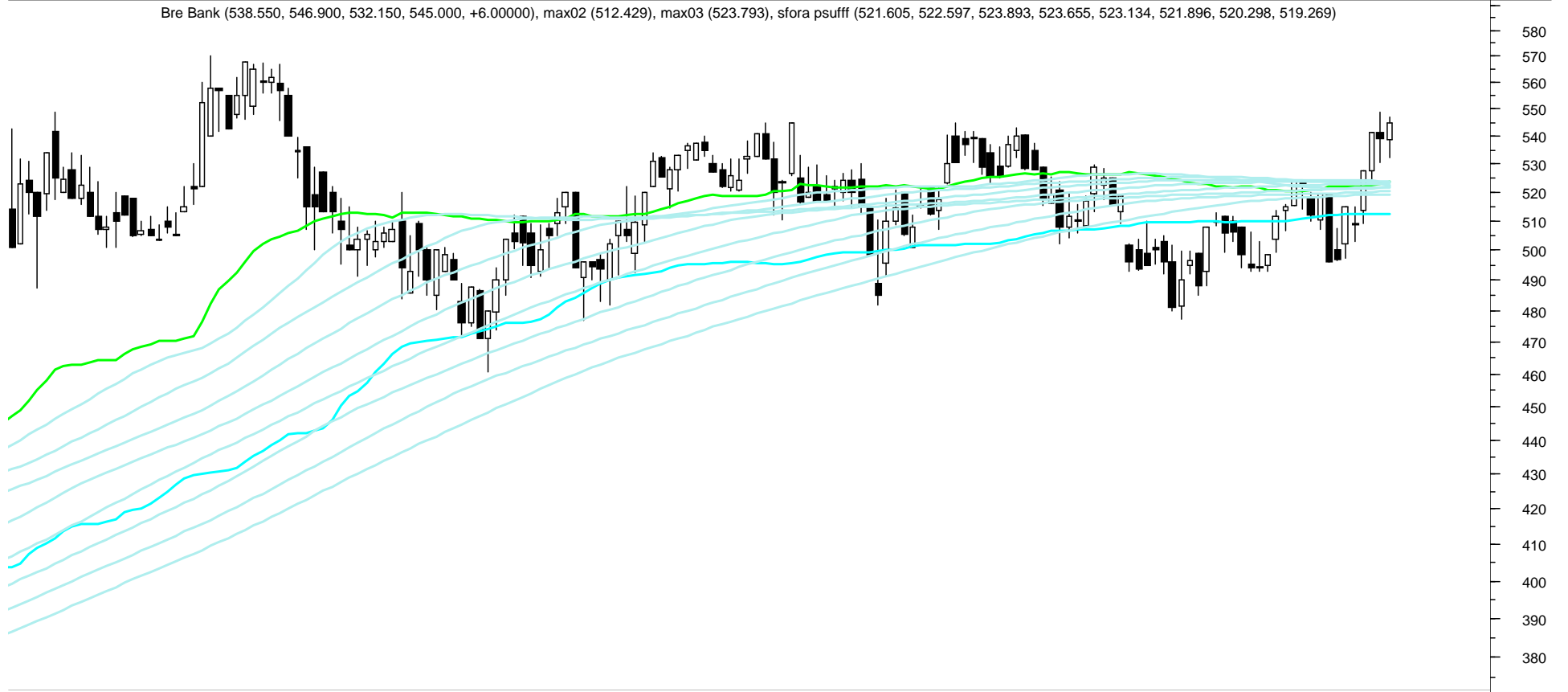
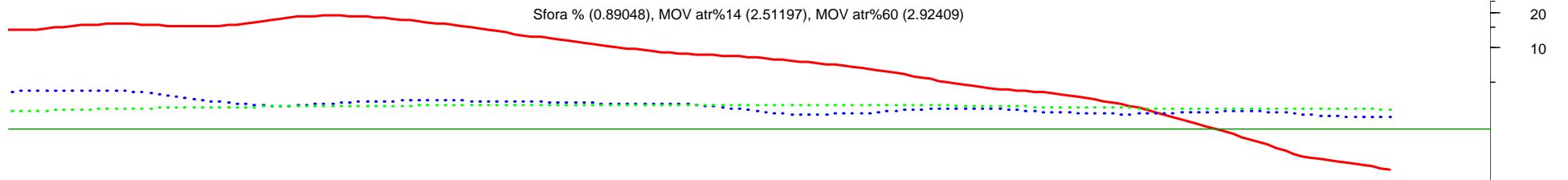


14 21 28 4 12 18 25 2 9 16 23 7 13 20 27 3 10 17 24 3 10 17 24 31 7 14 22 28 5 12 19 26 2 9 16 23

November December 2014 February March April May June

x100





14 21 28 4 12 18 25 2 9 16 23 7 13 20 27 3 10 17 24 3 10 17 24 31 7 14 22 28 5 12 19 26 2 9 16 23
 November December 2014 February March April May June

Sfora % (1.90928), MOV atr%14 (2.26936), MOV atr%60 (2.34454)

5

Netia (5.24000, 5.30000, 5.24000, 5.28000, +0.03000), max02 (5.08456), max03 (5.24472), sfora psuffi (5.25453, 5.23633, 5.19813, 5.16847, 5.15517, 5.15529, 5.16750, 5.17738)

5.80

5.75

5.70

5.65

5.60

5.55

5.50

5.45

5.40

5.35

5.30

5.25

5.20

5.15

5.10

5.05

5.00

4.95

4.90

4.85

4.80

4.75

4.70

4.65

4.60

4.55

4.50

4.45

4.40

4.45

4.50

4.55

4.60

4.65

4.70

4.75

4.80

4.85

4.90

4.95

5.00

5.05

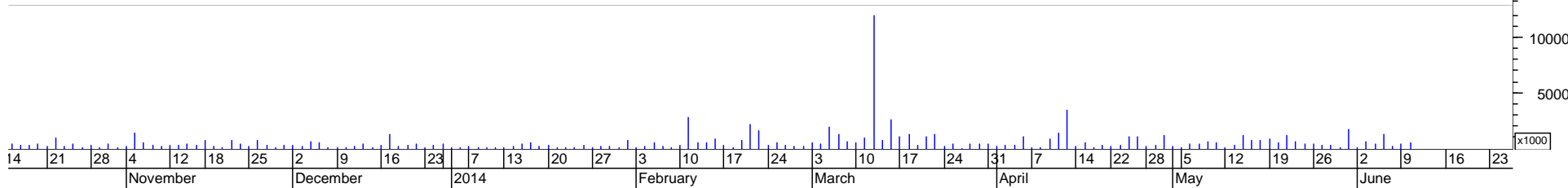
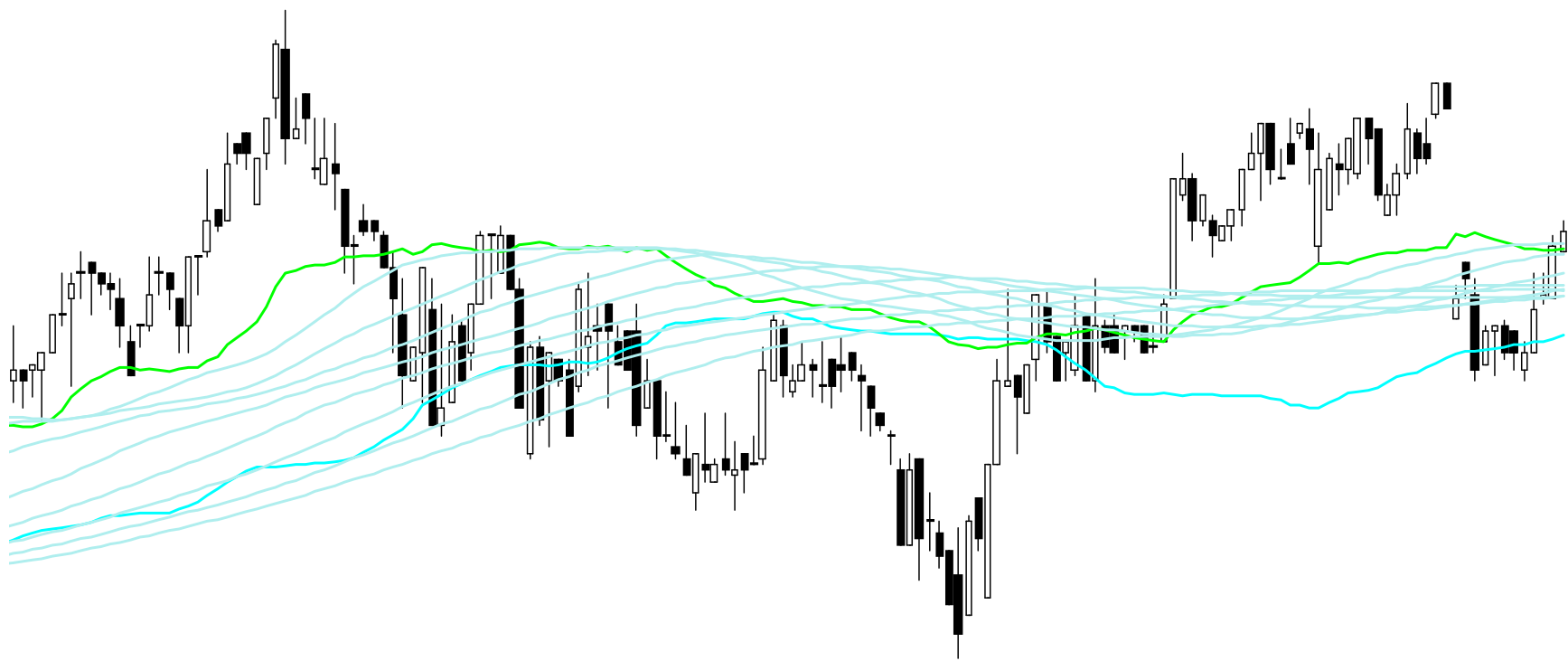
5.10

5.15

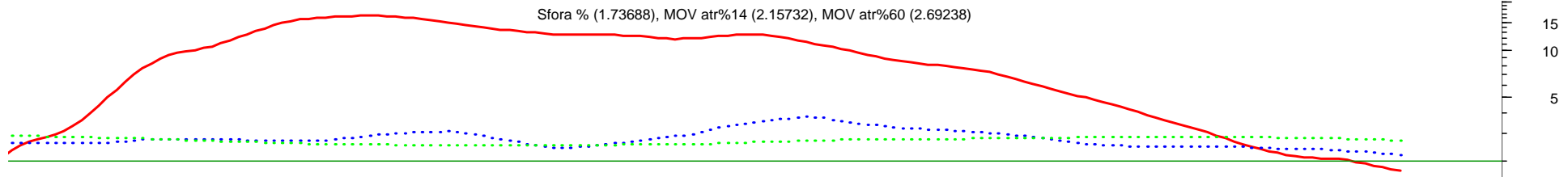
5.20

5.25

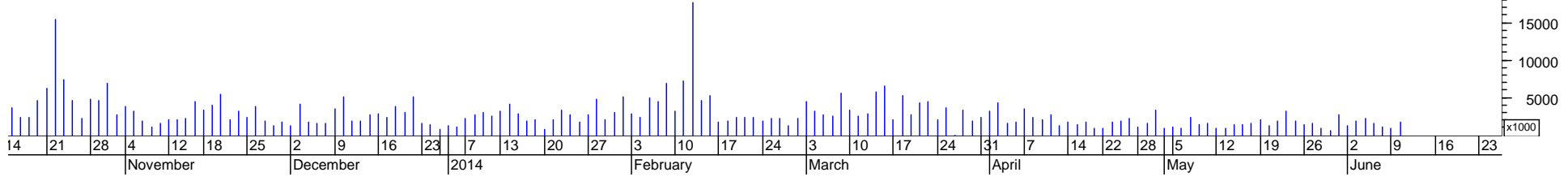
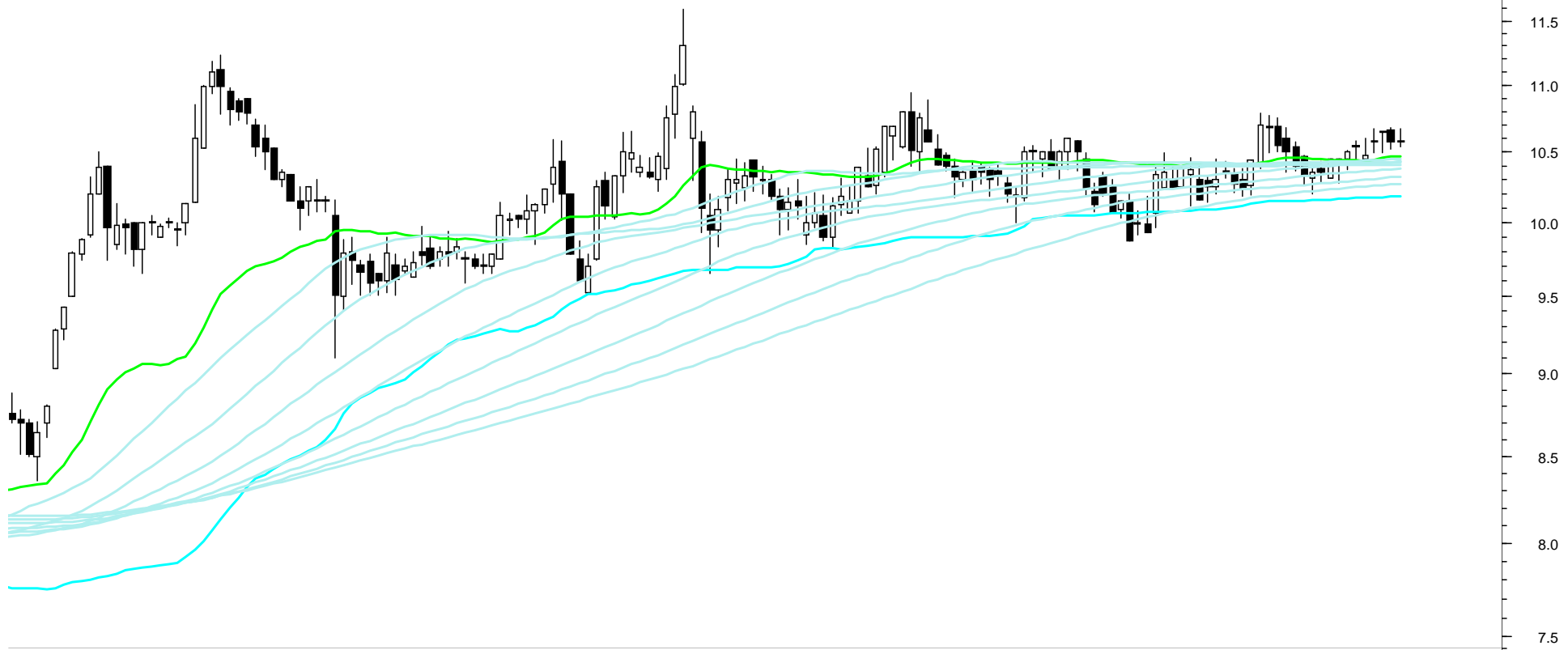
5.30



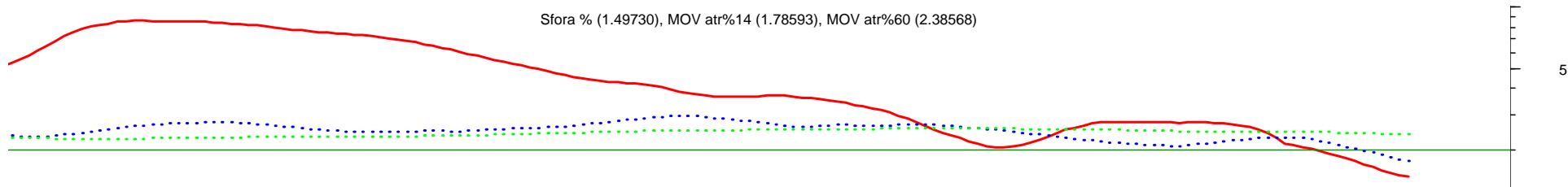
14 21 28 4 12 18 25 2 December 9 16 23 7 13 20 27 3 10 17 24 3 10 17 24 31 7 14 22 28 5 12 19 26 2 9 16 23
November December 2014 February March April May June
x1000



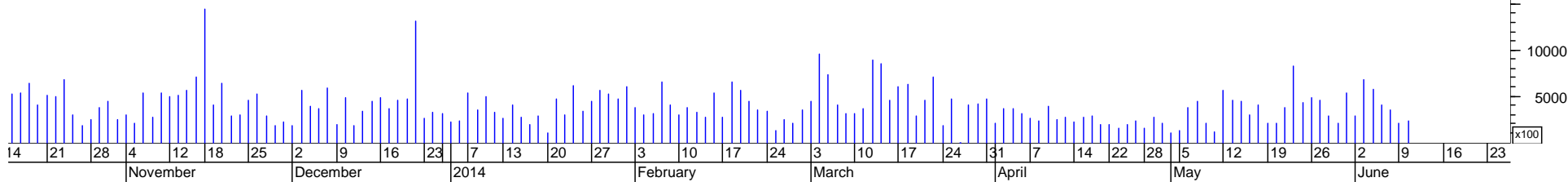
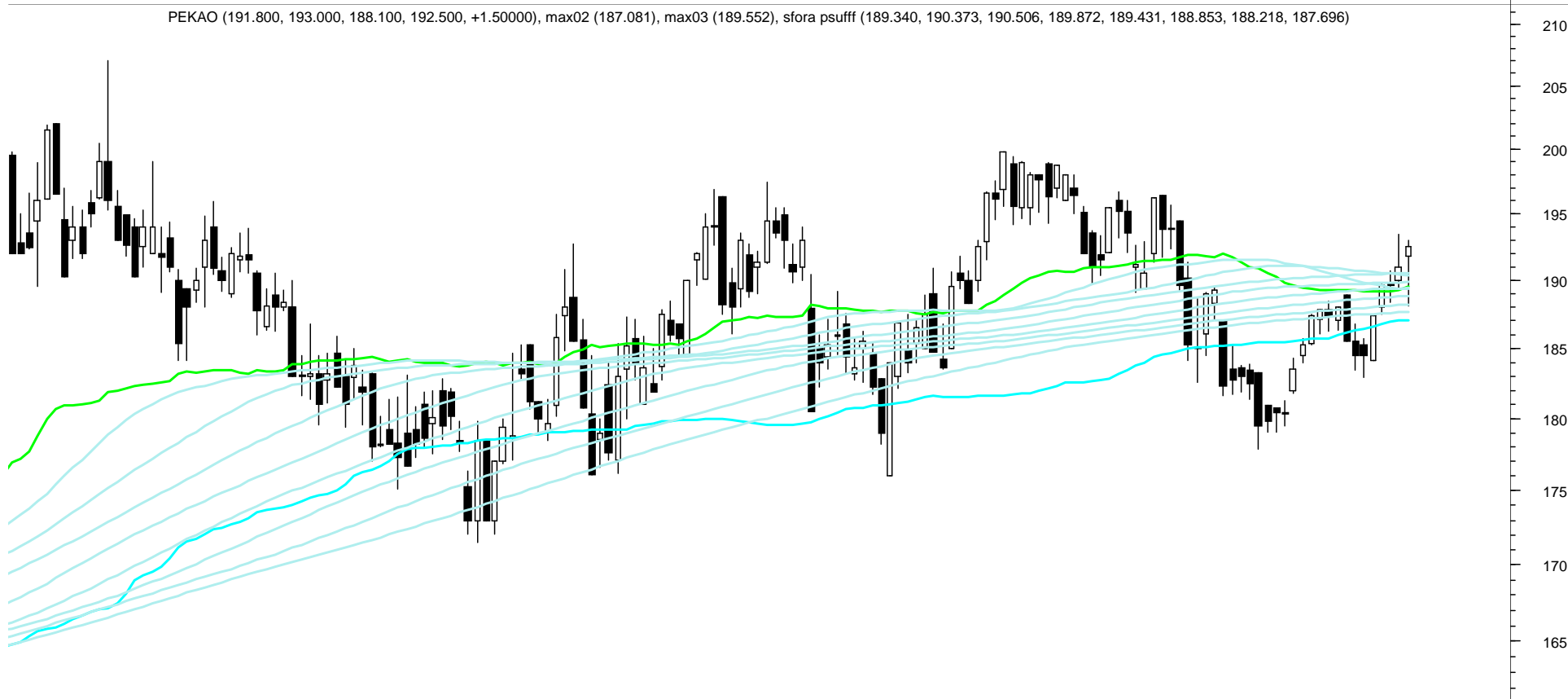
TPSA (10.5700, 10.6700, 10.5400, 10.5700, +0.0000), max02 (10.1801), max03 (10.4670), sfora psuff (10.4491, 10.4293, 10.4281, 10.4259, 10.4089, 10.3799, 10.3206, 10.2684)



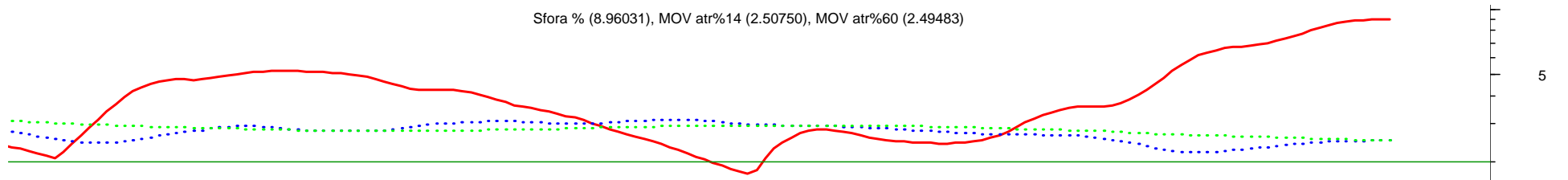
Sfora % (1.49730), MOV atr%14 (1.78593), MOV atr%60 (2.38568)



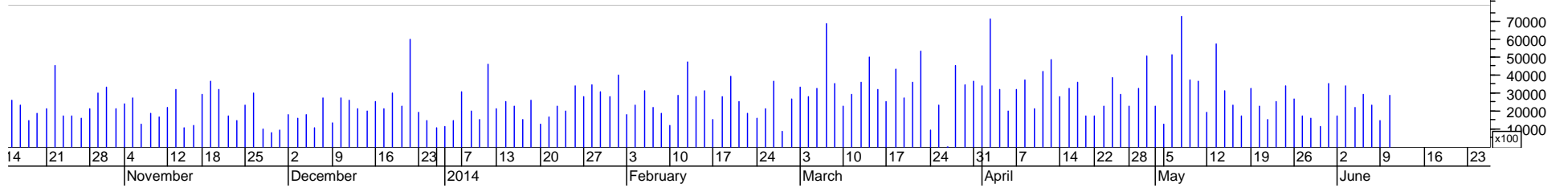
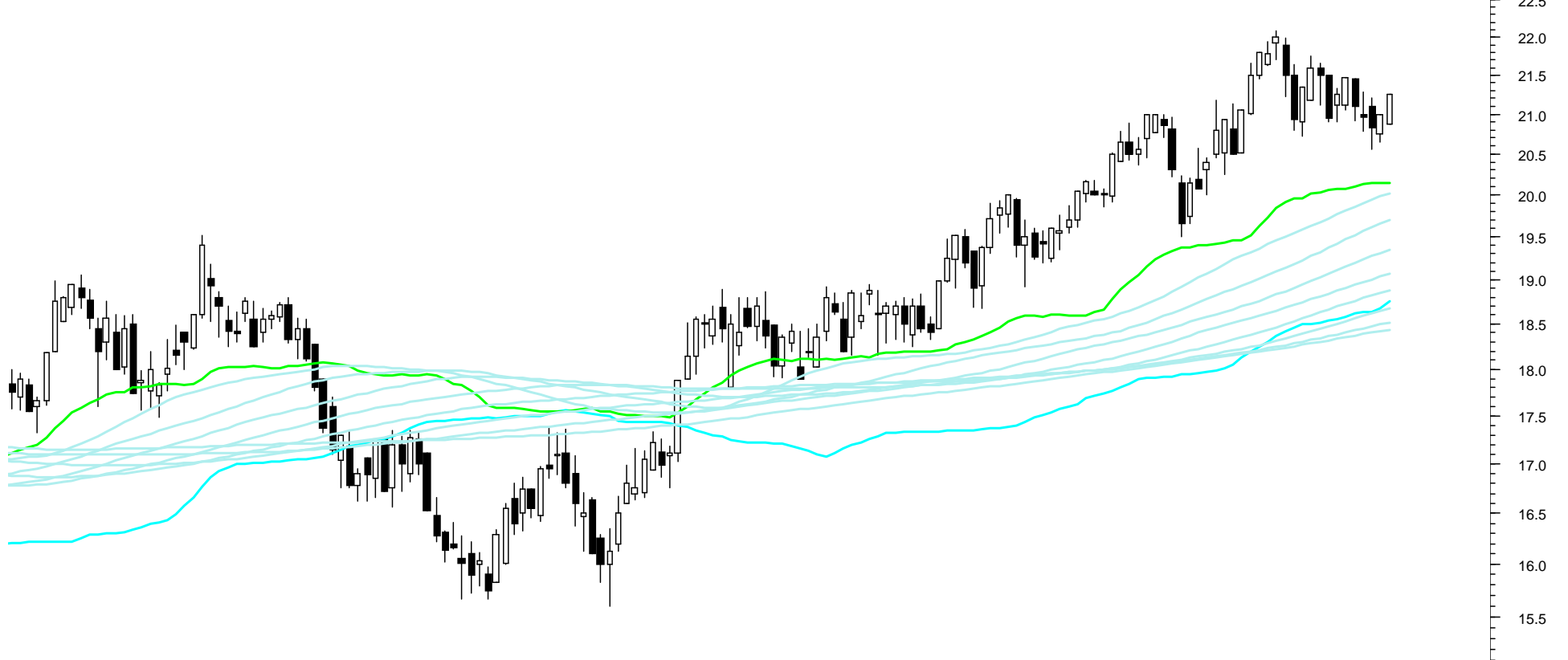
PEKAO (191.800, 193.000, 188.100, 192.500, +1.50000), max02 (187.081), max03 (189.552), sfora psuff (189.340, 190.373, 190.506, 189.872, 189.431, 188.853, 188.218, 187.696)



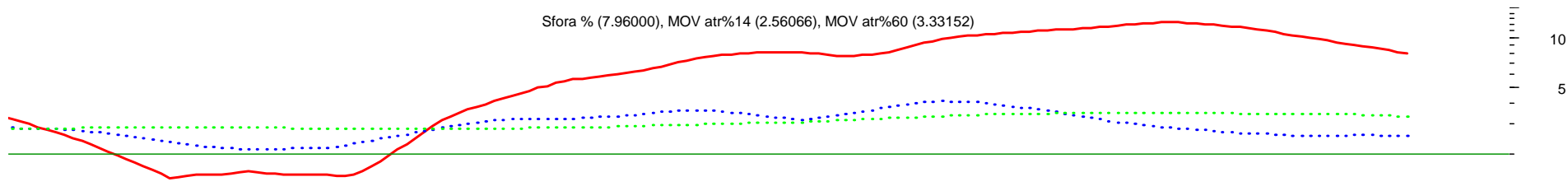
Sfora % (8.96031), MOV atr%14 (2.50750), MOV atr%60 (2.49483)



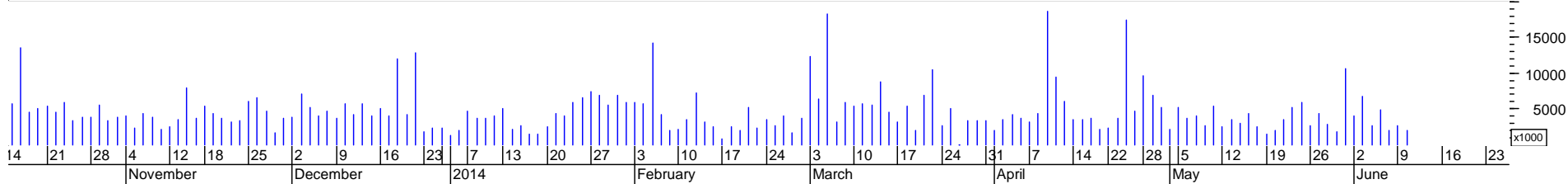
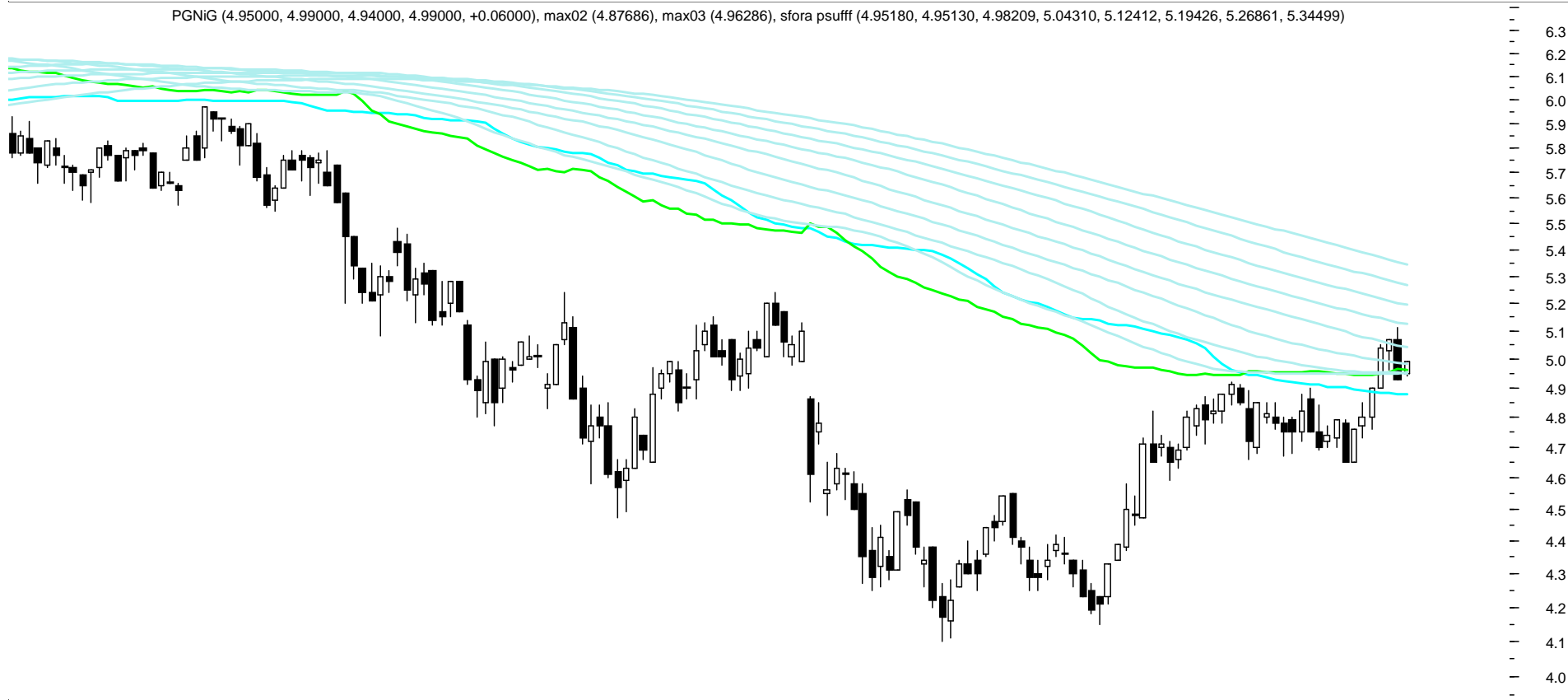
PGE (20.8800, 21.2500, 20.8800, 21.2500, +0.25000), max02 (18.7542), max03 (20.1403), sfora psuff (20.0199, 19.6939, 19.3465, 19.0736, 18.8798, 18.6739, 18.5159, 18.4385)



Sfora % (7.96000), MOV atr%14 (2.56066), MOV atr%60 (3.33152)



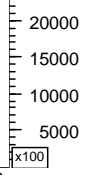
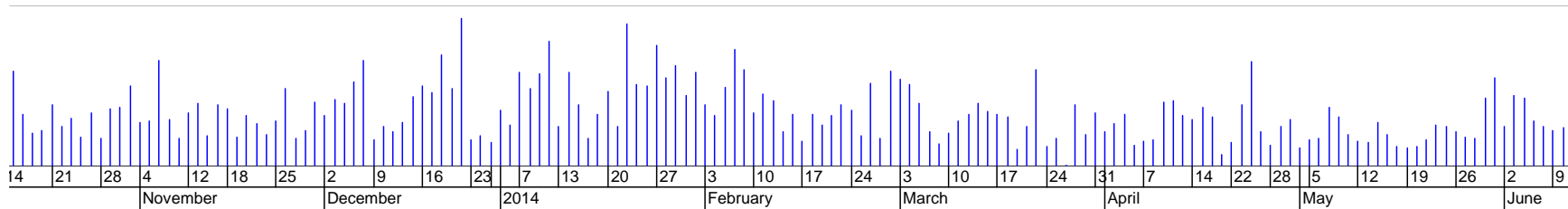
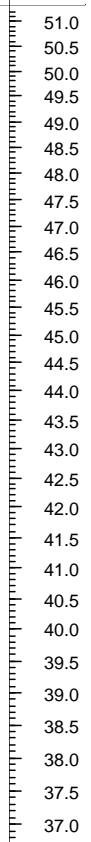
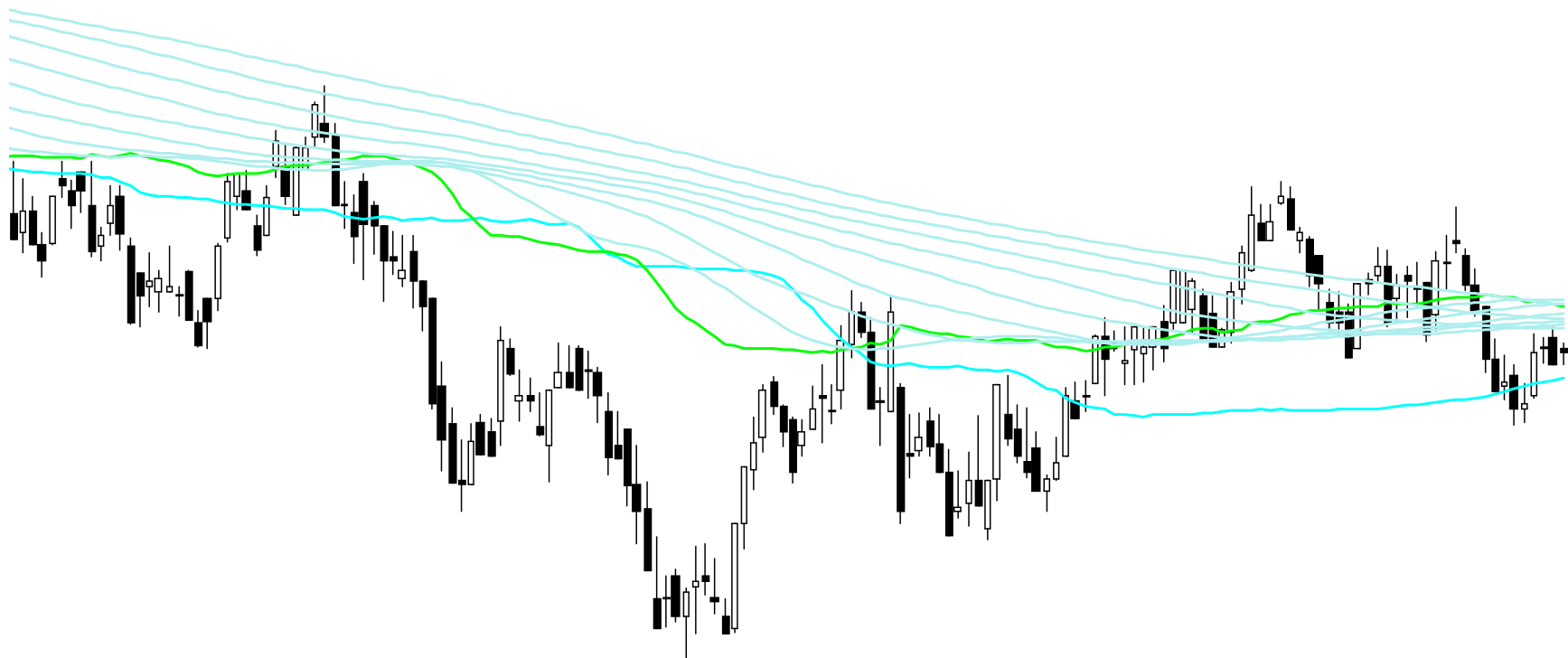
PGNIG (4.95000, 4.99000, 4.94000, 4.99000, +0.06000), max02 (4.87686), max03 (4.96286), sfora psuff (4.95180, 4.95130, 4.98209, 5.04310, 5.12412, 5.19426, 5.26861, 5.34499)



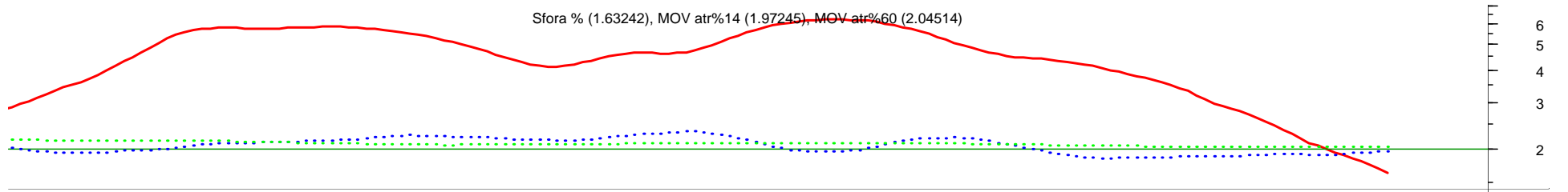
Sfora % (1.25562), MOV atr%14 (2.37553), MOV atr%60 (2.72407)

5

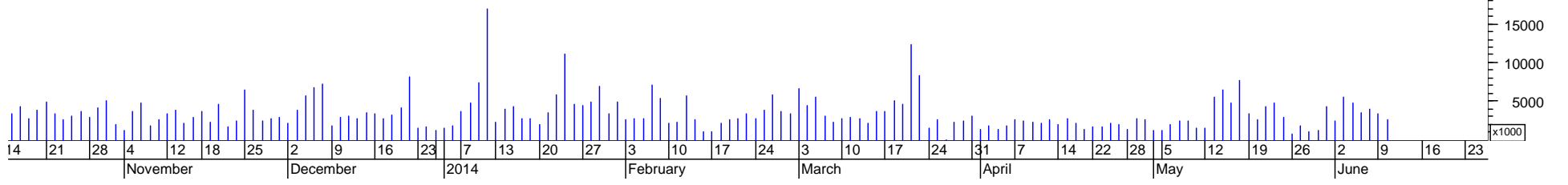
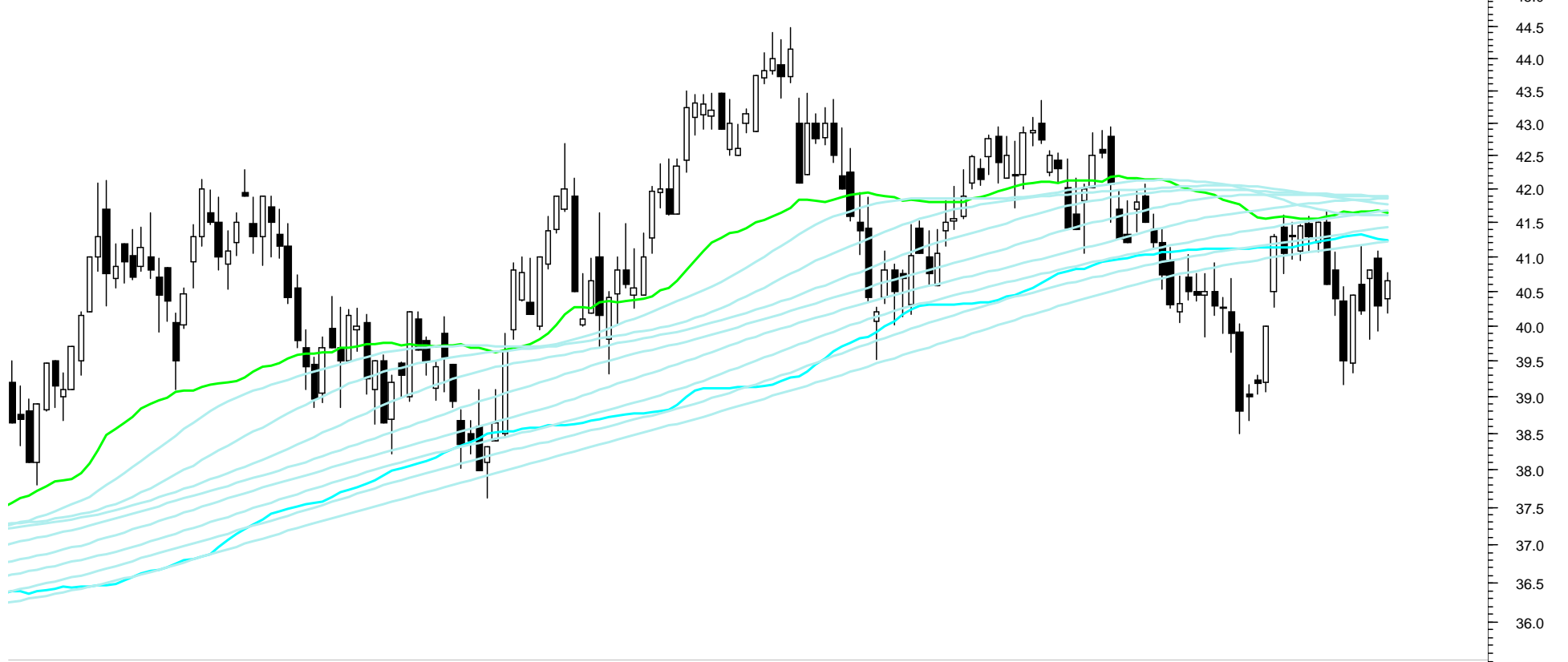
PKN Orlen (42.9900, 43.1100, 42.7000, 42.9200, +0.22000), max02 (42.4444), max03 (43.8110), sfora psuff (43.9393, 43.8500, 43.6710, 43.5210, 43.4566, 43.3897, 43.5635, 43.8385)

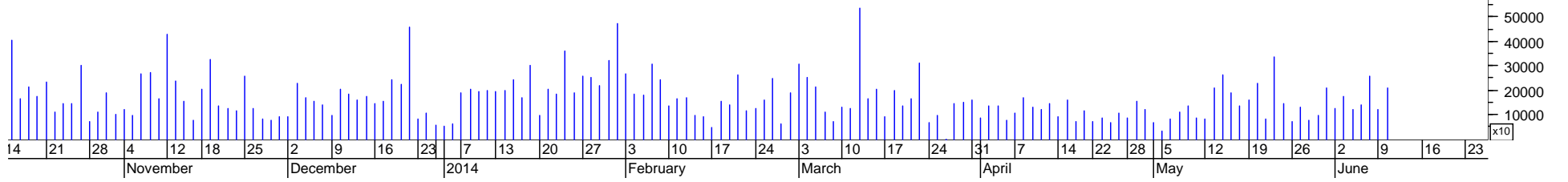
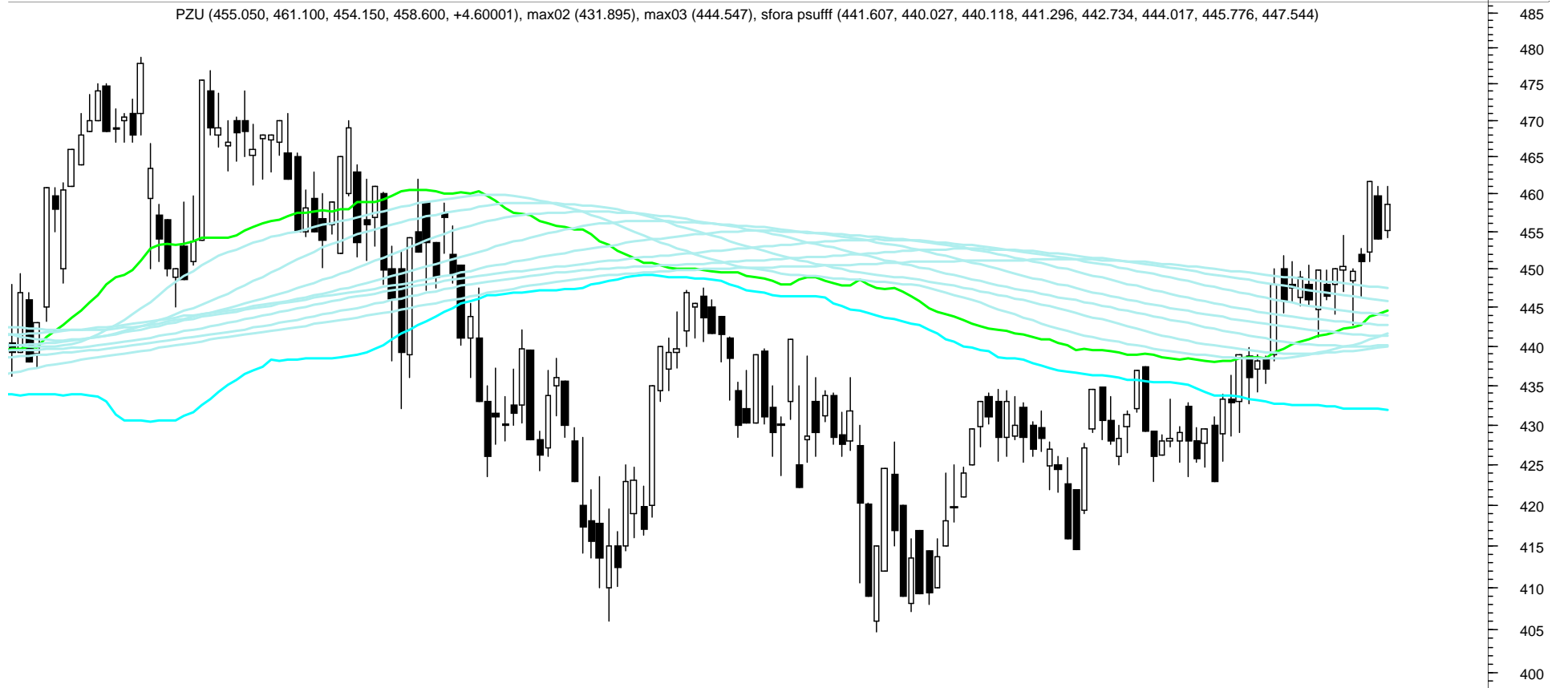
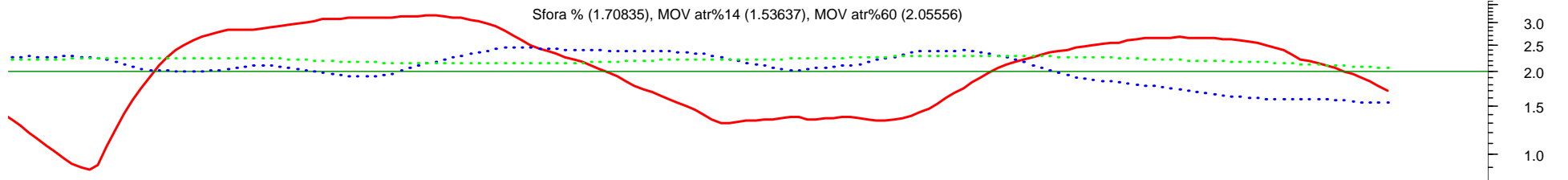


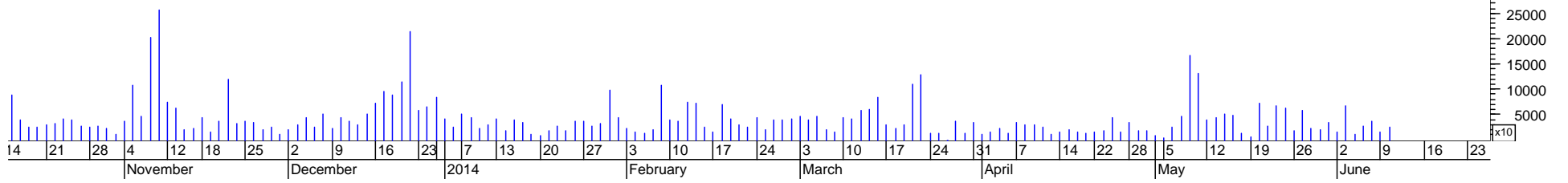
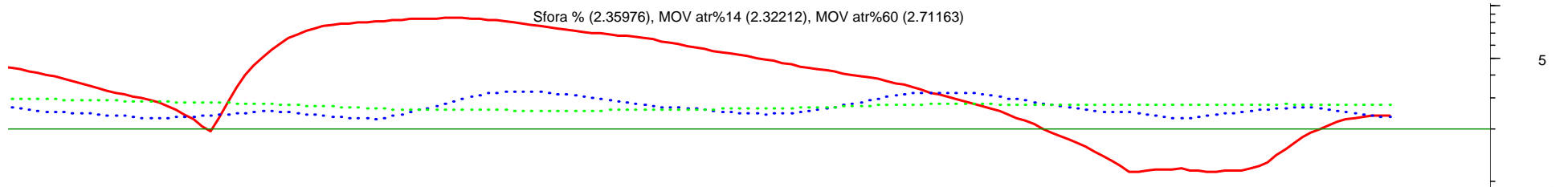
Sfora % (1.63242), MOV atr%14 (1.97245), MOV atr%60 (2.04514)



PKOBP (40.3900, 40.7700, 40.1900, 40.6500, +0.36000), max02 (41.2494), max03 (41.6495), sfora psuff (41.6091, 41.7780, 41.8893, 41.8805, 41.8543, 41.6740, 41.4296, 41.2164)

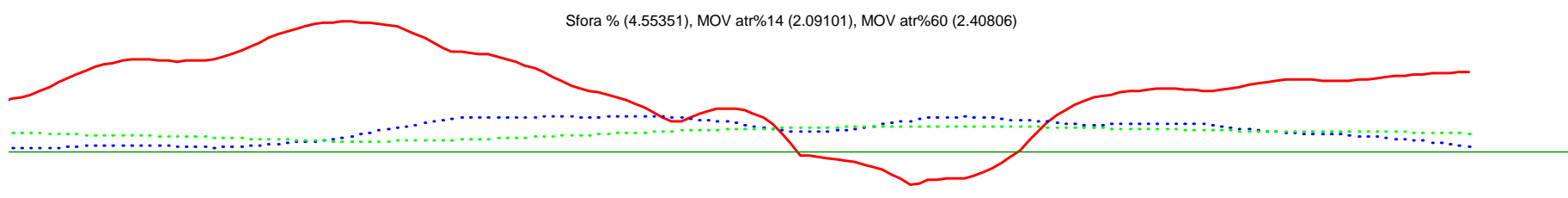




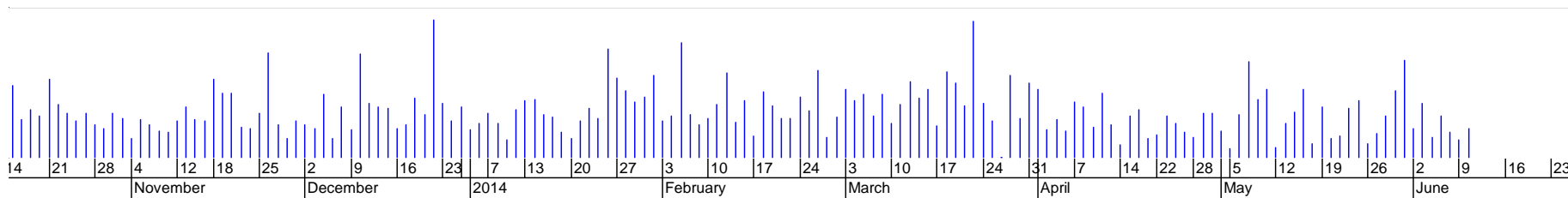
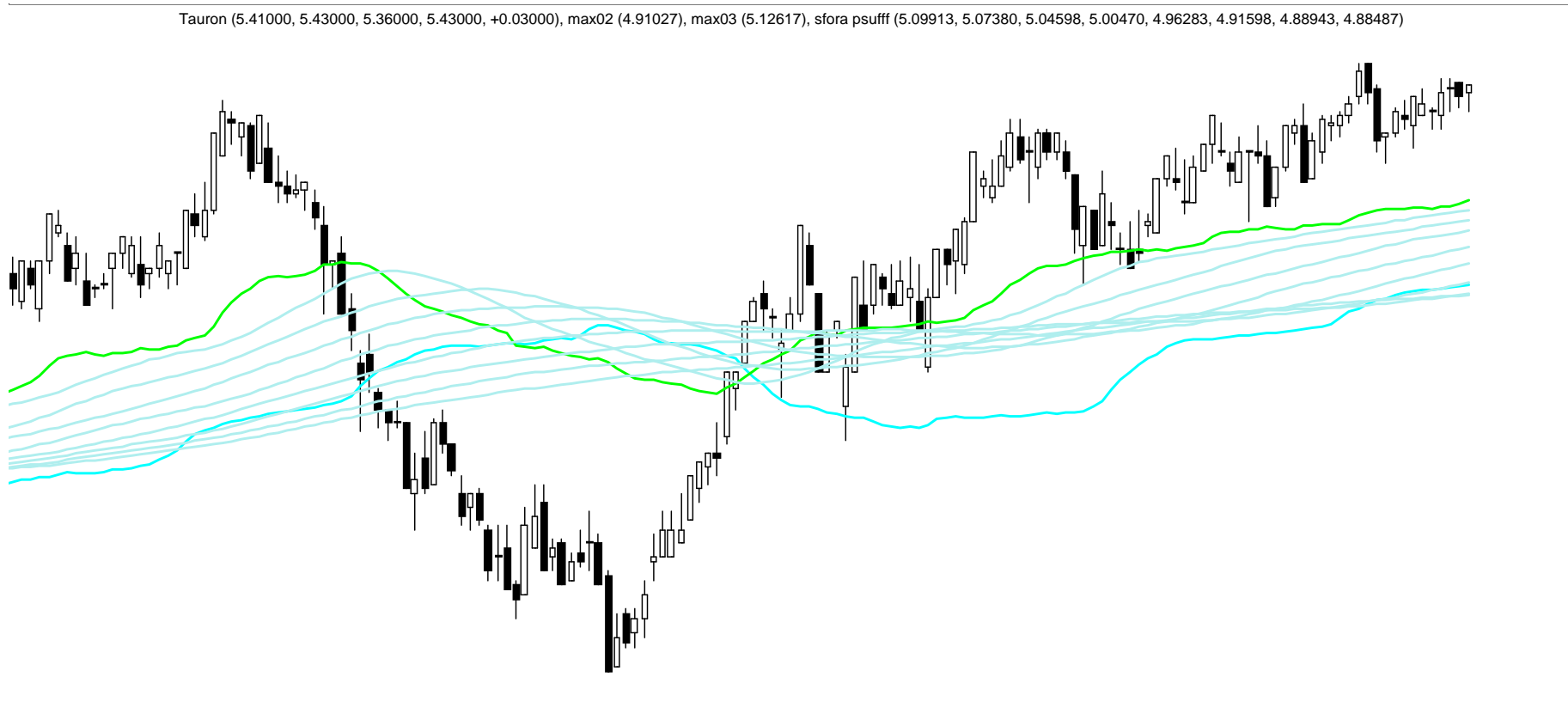


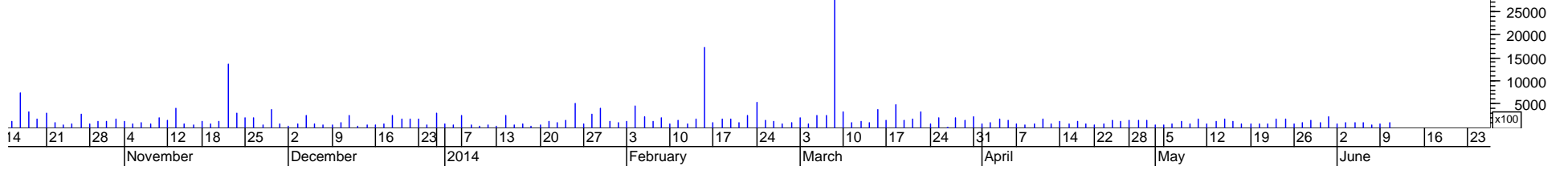
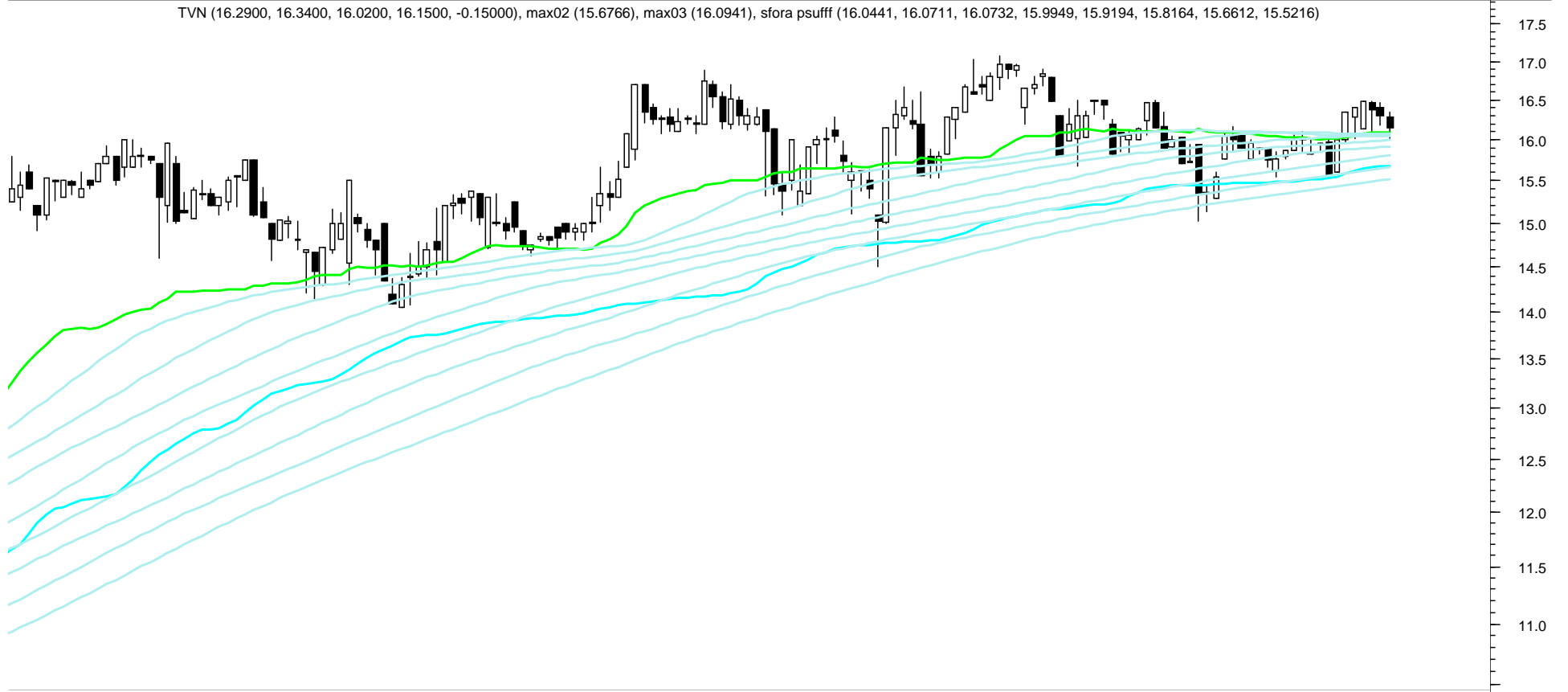
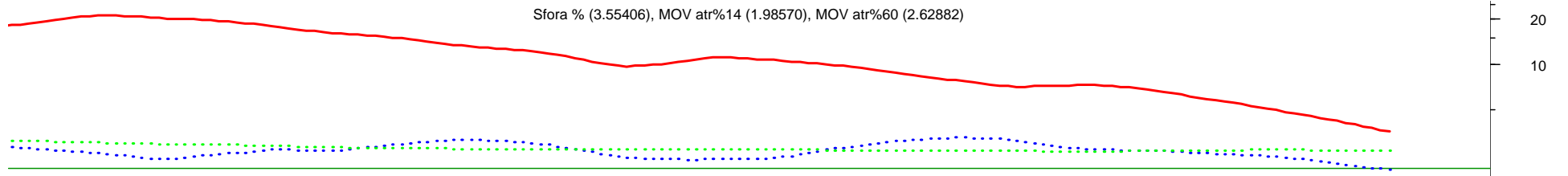
Sfora % (4.55351), MOV atr%14 (2.09101), MOV atr%60 (2.40806)

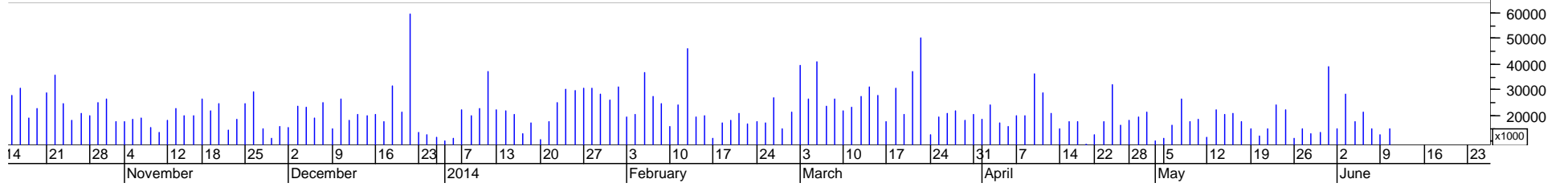
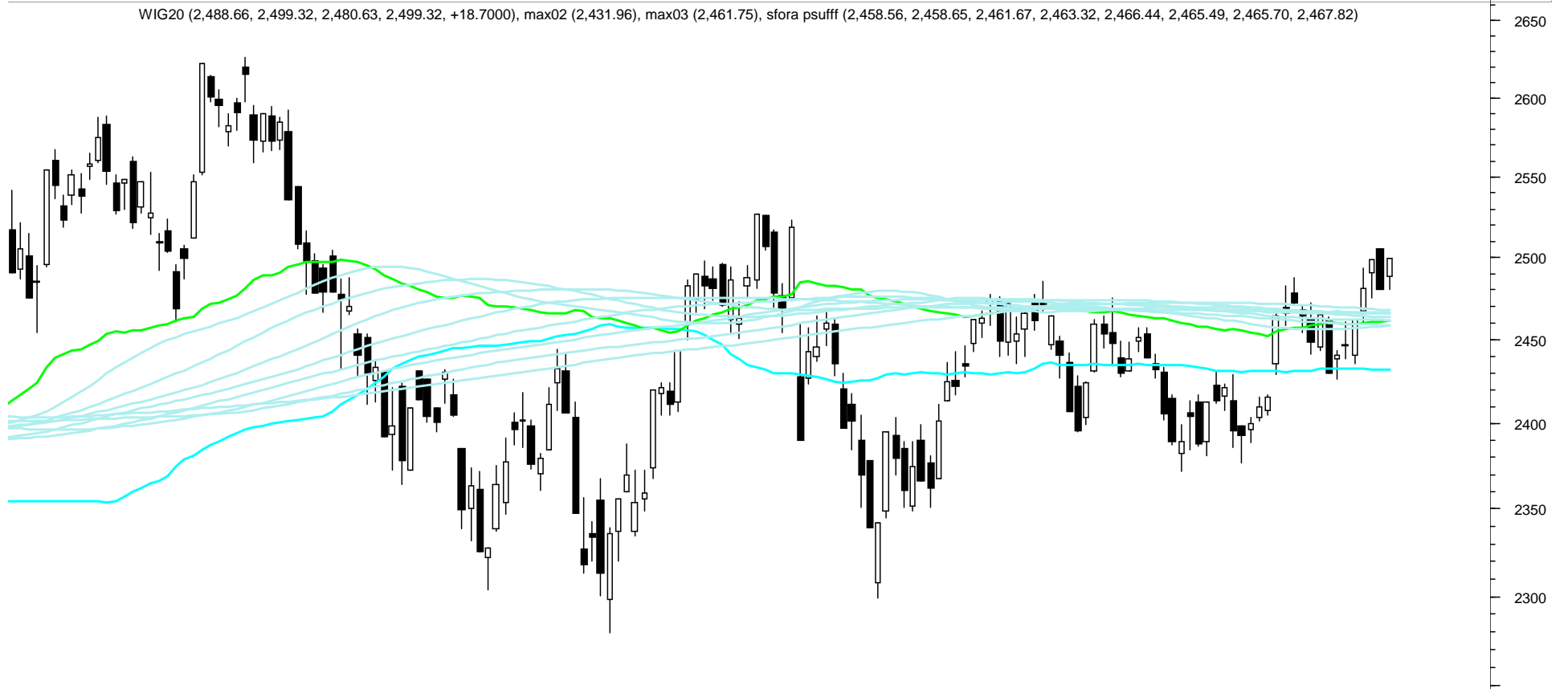
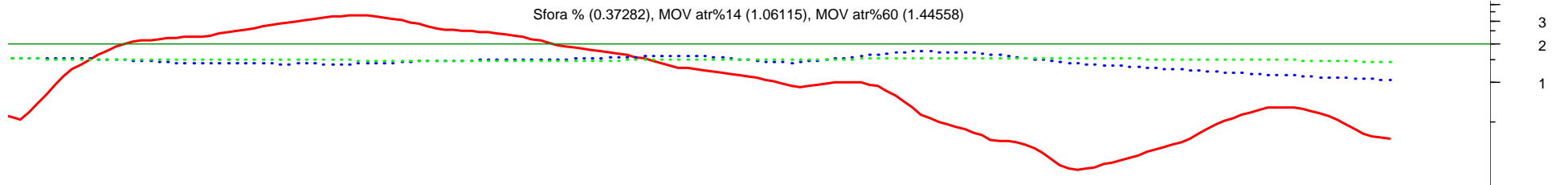
5



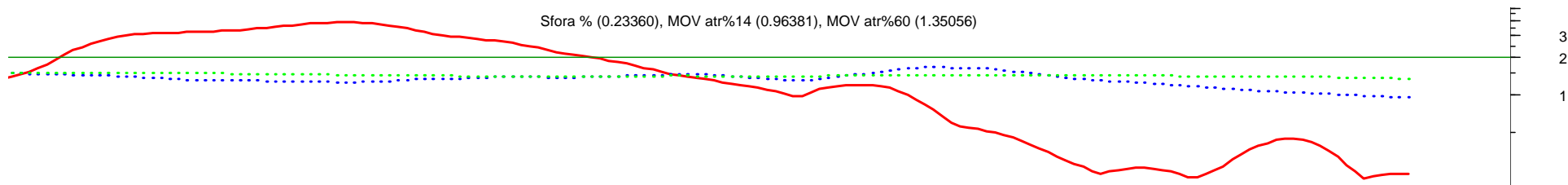
Tauron (5.41000, 5.43000, 5.36000, 5.43000, +0.03000), max02 (4.91027), max03 (5.12617), sfora psuff (5.09913, 5.07380, 5.04598, 5.00470, 4.96283, 4.91598, 4.88943, 4.88487)







Sfora % (0.23360), MOV atr%14 (0.96381), MOV atr%60 (1.35056)



WIG30 (2,661.01, 2,672.48, 2,654.08, 2,672.48, +18.9099), max02 (2,580.73), max03 (2,614.66), sfora psuff (2,608.65, 2,606.59, 2,609.18, 2,610.21, 2,612.68, 2,610.15, 2,608.99, 2,610.31)

